

New Sever Installation

Installation on promise S'KISS

Author	Angelo GUARNACCIA
Date	16/01/2024
Configuration information	Account Server 1.8 Data Server 1.5.0

Summary

I.	Server Overview	3
1.	Client Server architecture.....	3
2.	Hardware Minimum Requirements.....	4
3.	Software Minimum Requirements.....	5
II.	Prerequisites.....	6
1.	Internet Information Services	6
2.	Microsoft SQL Server	8
3.	Microsoft Visual C++ 2008 Redistributable - x86 9.0.30729.6161	8
4.	Python 2.7	8
5.	SVN	9
III.	Server Installation.....	10
1.	Configure IIS server	10
1.1.	Extract data and add authorized users.....	10
1.2.	Configure IIS applications	14
1.3.	Configuring SMTP	23
2.	Extract Data	24
2.1.	KI Folder.....	24
2.2.	FlexLM configuration.....	28

2.3.	Install_Dir Key.....	29
3.	Configure SQL Server.....	31
3.1.	Add user and authorization.....	31
3.2.	Restore KI_BOT.....	33
3.3.	Restore BAM.....	34
3.4.	Install osql.....	34
3.5.	Microsoft SQL server 2012 add-on.....	35
3.6.	Connection to IIS	35
4.	Configure ODBC connection.....	35
5.	Configure Data Server	39
6.	SVN	41
7.	Configure BAM	42
8.	Setup automated Saved Copy task.....	44
9.	Install and configure Tornado server (Optional)	44
9.1.	Configure Tornado.....	44

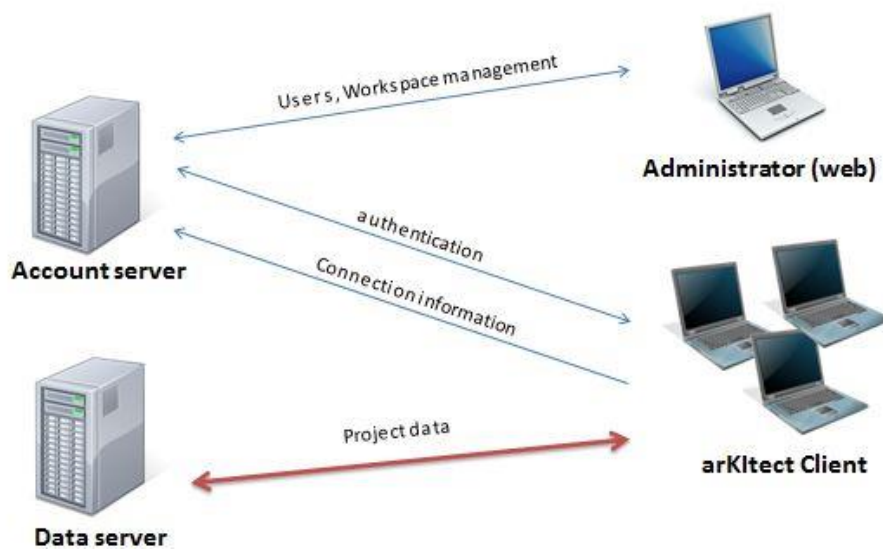
I. Server Overview

1. Client Server architecture

architecture is based on a client-server model.

Sever is composed of two main features:

- Account server (connection, licenses, user and work spaces management)
- Data server (all projects data)



Account server and data sever can be installed on two different physical machine or on the same machine.

2. Hardware Minimum Requirements

Accounts Server

Specification	Recommended	Minimal
Processor	2 Cores, 2.33 Ghz	2 Cores, 2.0 GHz
RAM	8 GB	4 GB
Hard disk	10 GB	10 GB

Data Server

Specification	Recommended	Minimal
Processor	6 Cores, 3.0 GHZ	2 Cores, 2.0 GHz
RAM	32 GB	8 GB
Hard disk	1 TB	200 GB

Client

Specification	Recommended	Minimal
Processor	2.0 GHZ	1.0 GHz
RAM	2 GB	1 GB
Hard disk	1 Gb	500 Mo

3. Software Minimum Requirements

Accounts Server

Specification	Minimal Version
Windows	Windows Server 2012
SQL server	SQL server express 2012
IIS	Internet Information Services 7.5
ASP .NET v2.0	Microsoft .NET Framework 2.0

Data Server

Specification	Minimal Version
Windows	Windows Server 2012
SQL server	SQL server Web 2012
IIS	Internet Information Services 7.5
ASP .NET v2.0	Microsoft .NET Framework 2.0

Client

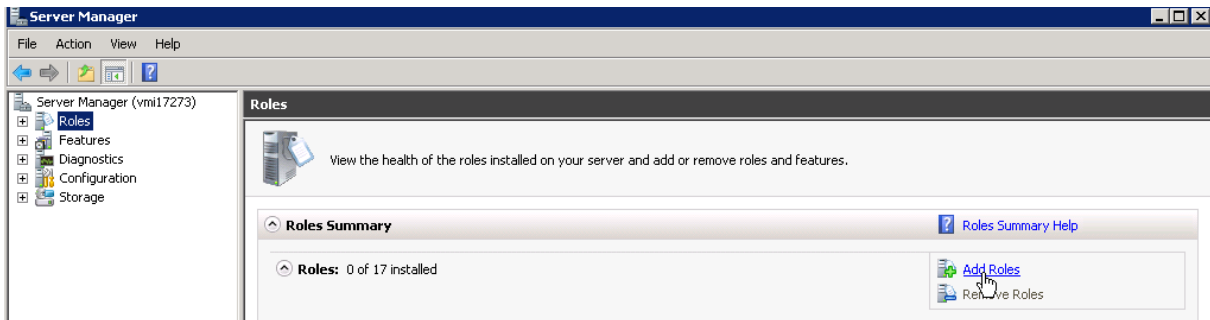
Specification	Minimal Version
Windows	Windows 10

II. Prerequisites

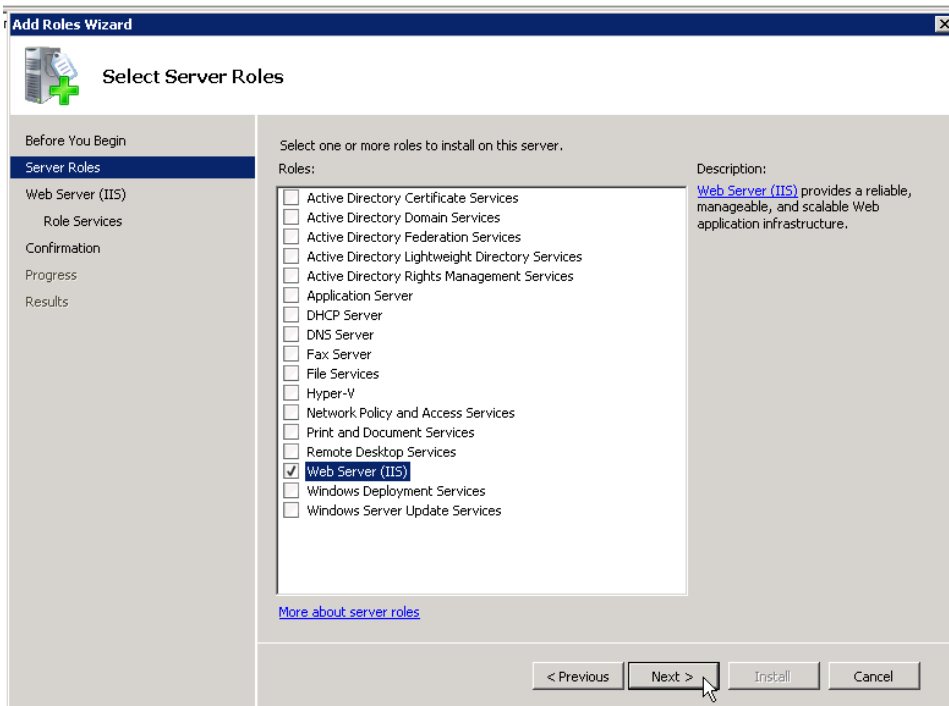
1. Internet Information Services

Internet Information Services can be installed, using "Administration tools -> Server Manager -> Roles" or "Add/Remove Windows Component" in "Add/Remove Programs" application (Windows distributive is needed. On OVH servers, distributive is in C:\I386 directory).

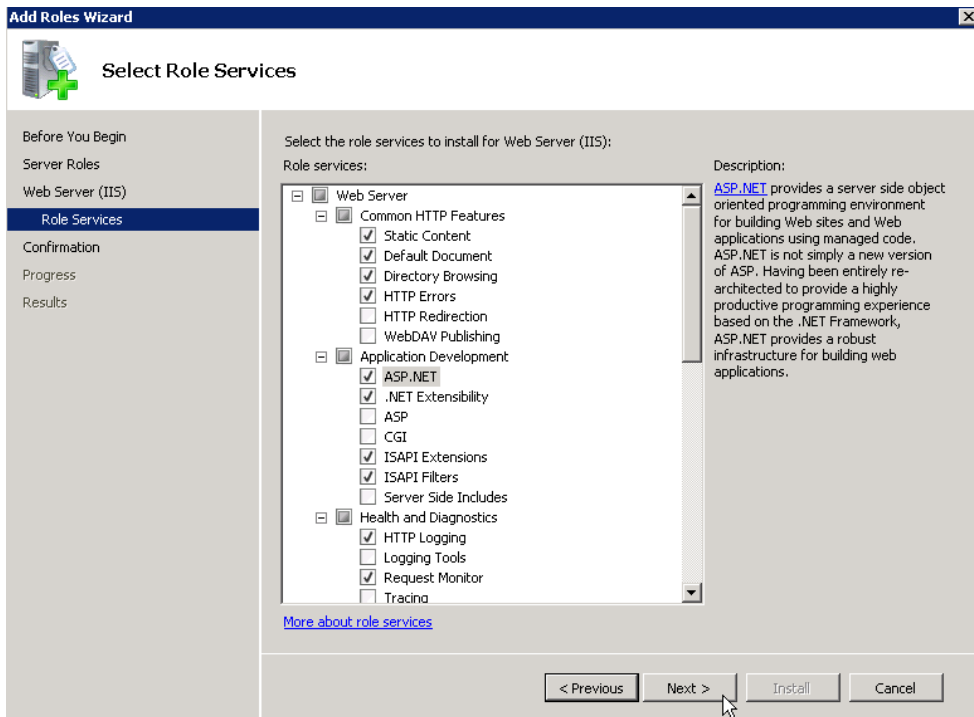
- Click on Add Roles link



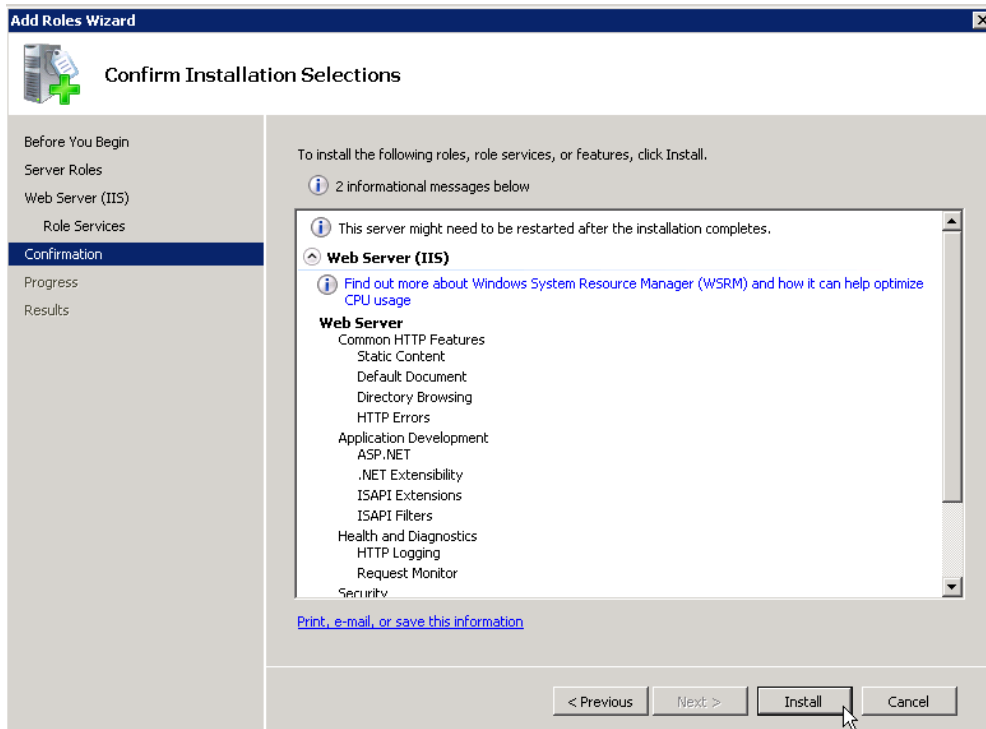
- On "Server Roles" tab, Select Server Web (IIS) and click on "Next"



- Roles Service: keep default values and add ASP.NET then click on "Next"



- Click on "Install"



2. Microsoft SQL Server

Minimal SQL Server version : SQL Server 2012 Web edition

Authentication : SQL Mixed (SQL + Win)

User must be added with full rights :

- NT AUTHORITY\NETWORK SERVICE (AUTORITE NT\SERVICE RÉSEAU if server is French)
- NT AUTHORITY\IUSR (AUTORITE NT\IUSR if server is French)

3. Microsoft Visual C++ 2008 Redistributable - x86 9.0.30729.6161

Install Package redistributable Microsoft Visual C++ 2008 MFC(NB we need the package which is compatible with arkiLicence.dll, usually we compile sources under the latest libraries, so here is the link to 9.0.30729.6161 libraries set <http://www.microsoft.com/en-us/download/details.aspx?id=26368>

we need x86 version

4. Python 2.7

- Install python 2.7 (standard installation)

<https://www.python.org/download/releases/2.7/>

we need x86 version

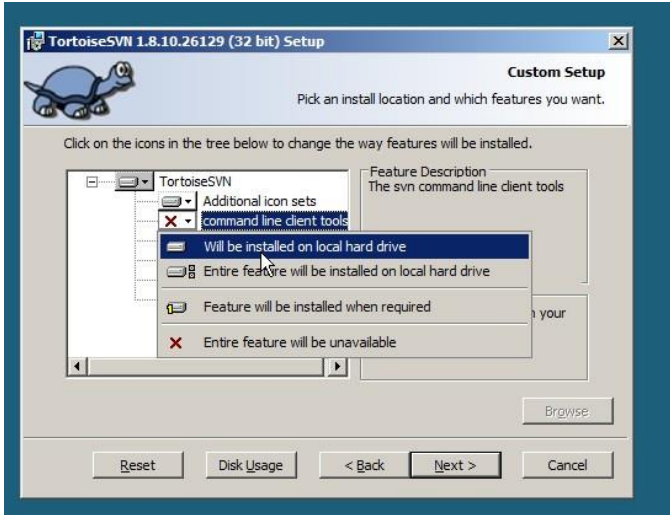
- Install pyodbc

pip install pyodbc

5. SVN

Attachment and images are now versioned on Subversion.

- Download [TortoiseSVN](#).
- Install it: don't not forget to include command line client tools

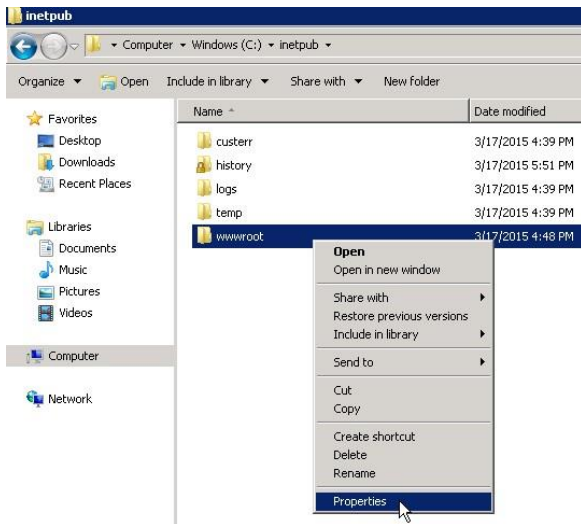


III. Server Installation

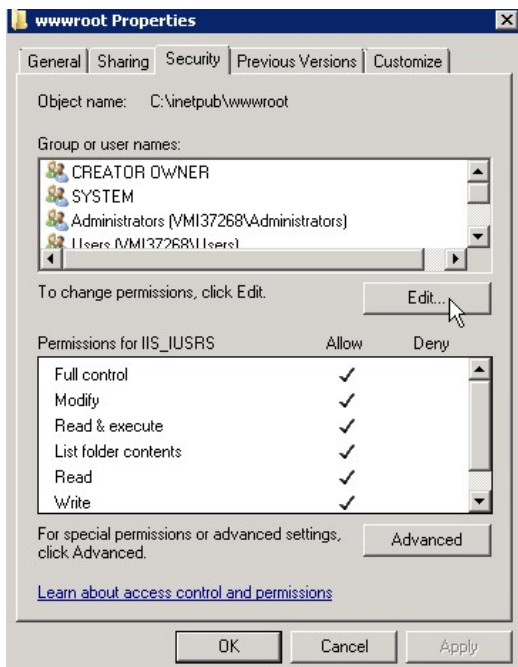
1. Configure IIS server

1.1. Extract data and add authorized users

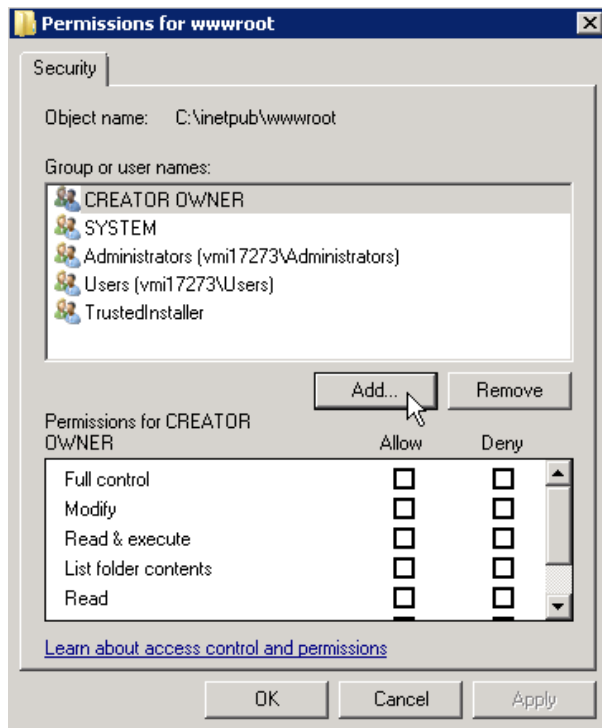
- Copy Main Server\inetpub *. * to standard IIS folder (i.e. C:\inetpub\wwwroot\.)
- Copy Data Server\inetpub *. * to standard IIS folder (i.e. C:\inetpub\wwwroot\.)
- Right click on C:\inetpub\wwwroot folders, select « Properties »



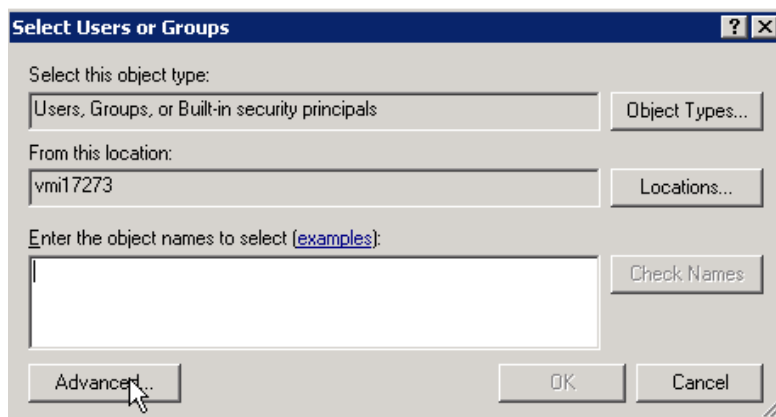
- On the **Security Tab**, click on "Edit" button



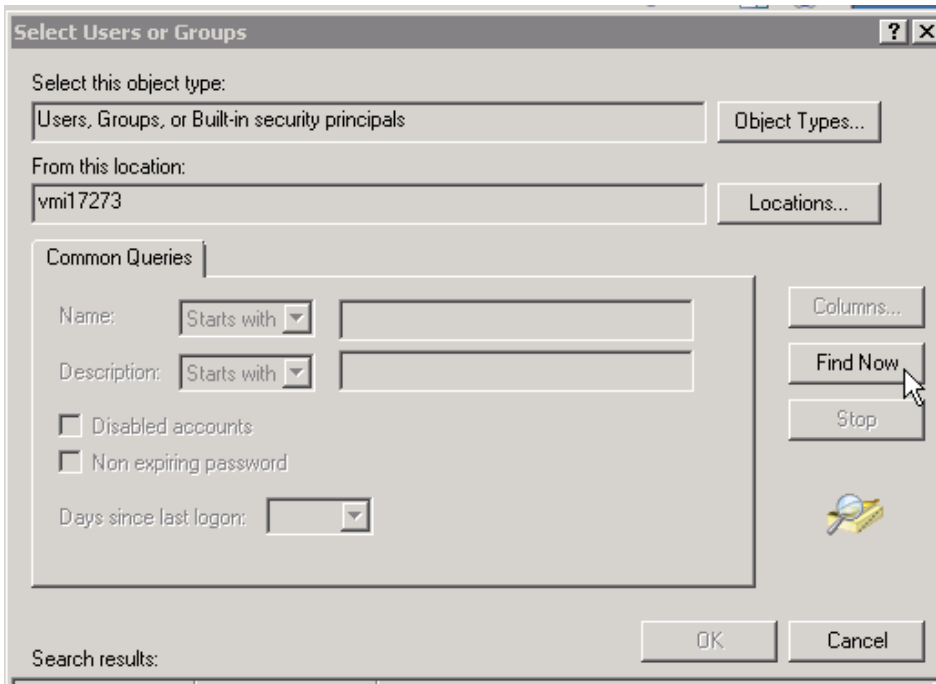
- Click on "Add" button



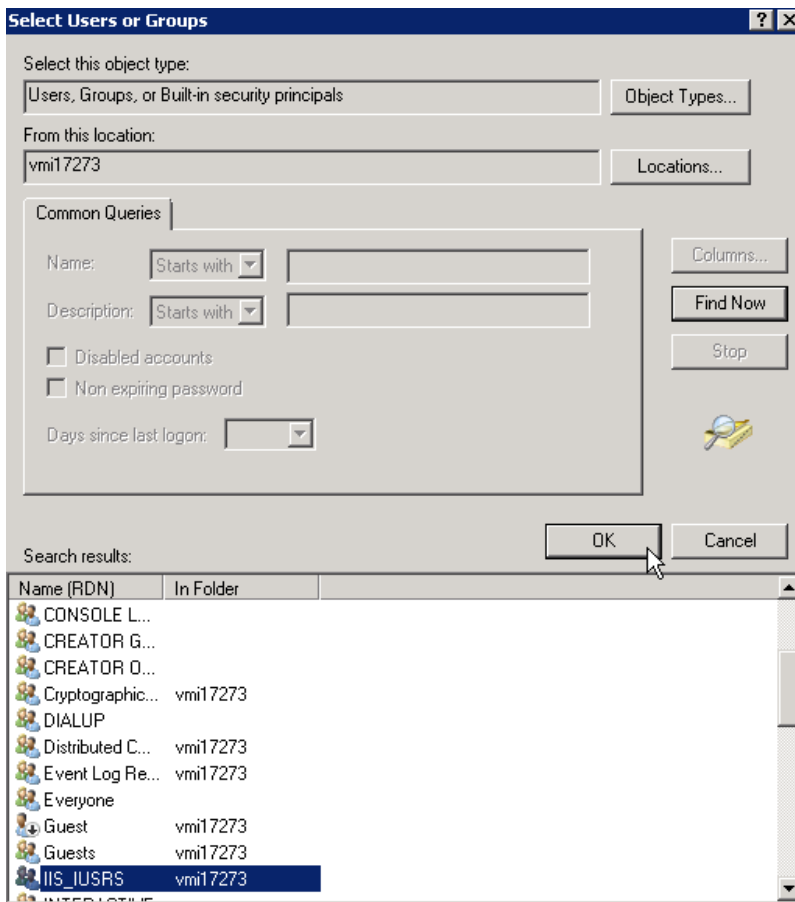
- Click on "Advanced" button



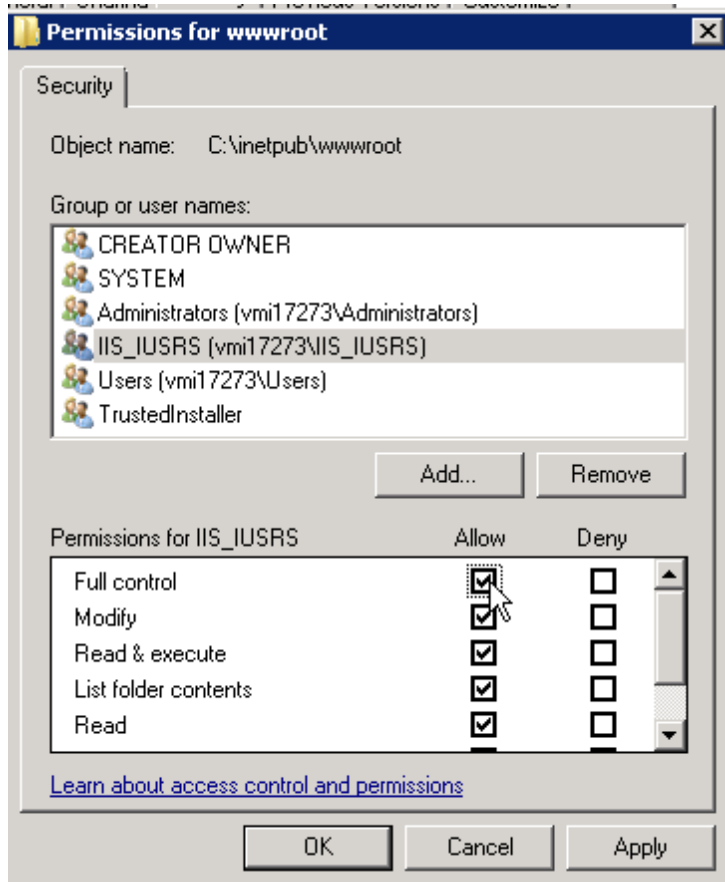
- Click on "Find New" button



- Find and select IIS_IUSRS, then click on "OK"



- Click on button "OK"
- Set Full control to this user



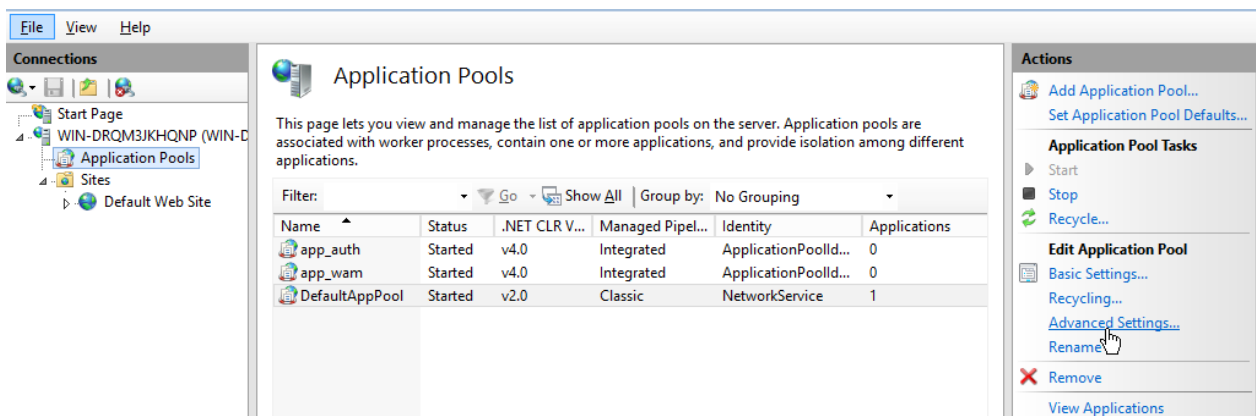
1.2. Configure IIS applications

1.2.1. Application Pools

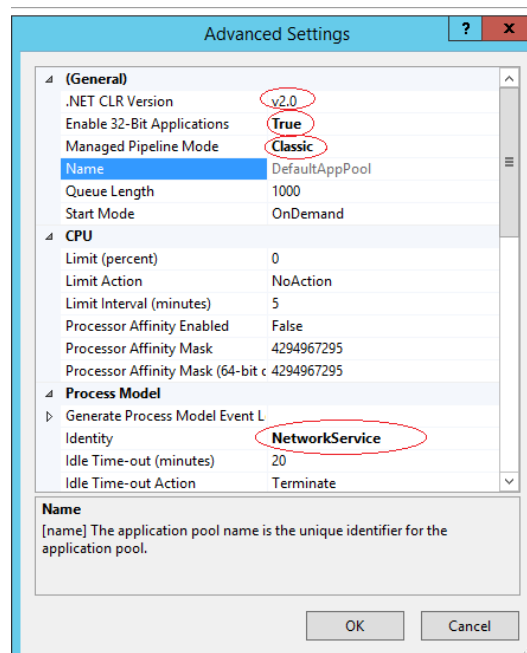
Launch IIS (Select Start => Programs => Administration tools => IIS)

Under Server name, select expand Application Pools

- Create 3 new applications pools :
 - app_data
 - app_wam
 - app_auth
- For applications pool "DefaultAppPool", "app_data", "app_wam", "app_auth", you must
 - Select each application pool and click on Advanced Setting

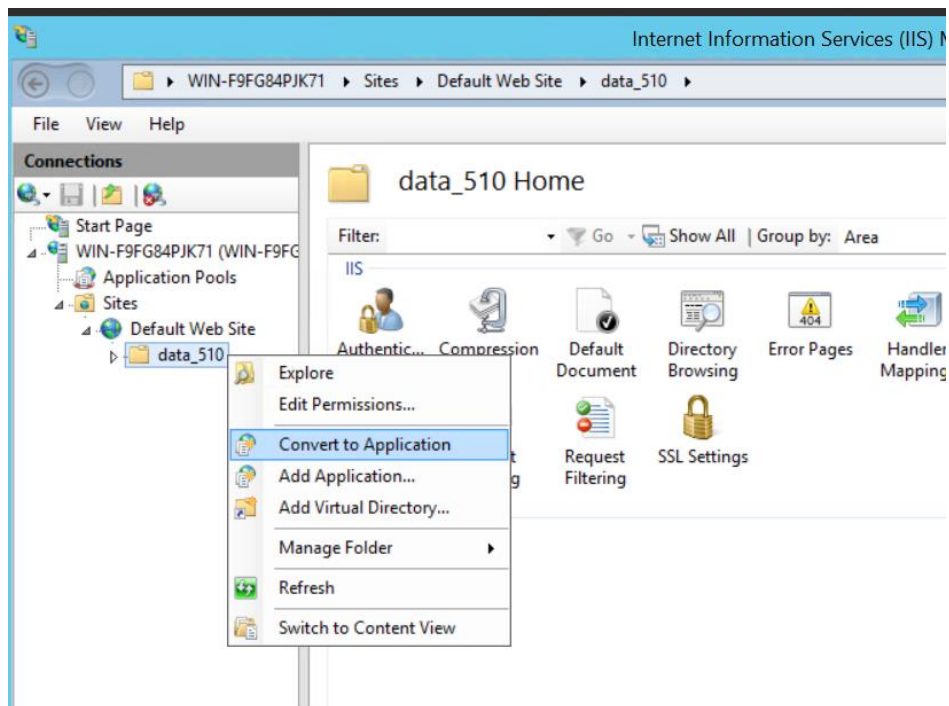


- Set .Net CLR versio to v2.0
- Set "Pipeline Mode" value to "Classic"
- Set "Identity" value to "NetworkService"
- If Server is 64 bit, set "Enable 32-Bit applications" to "True"

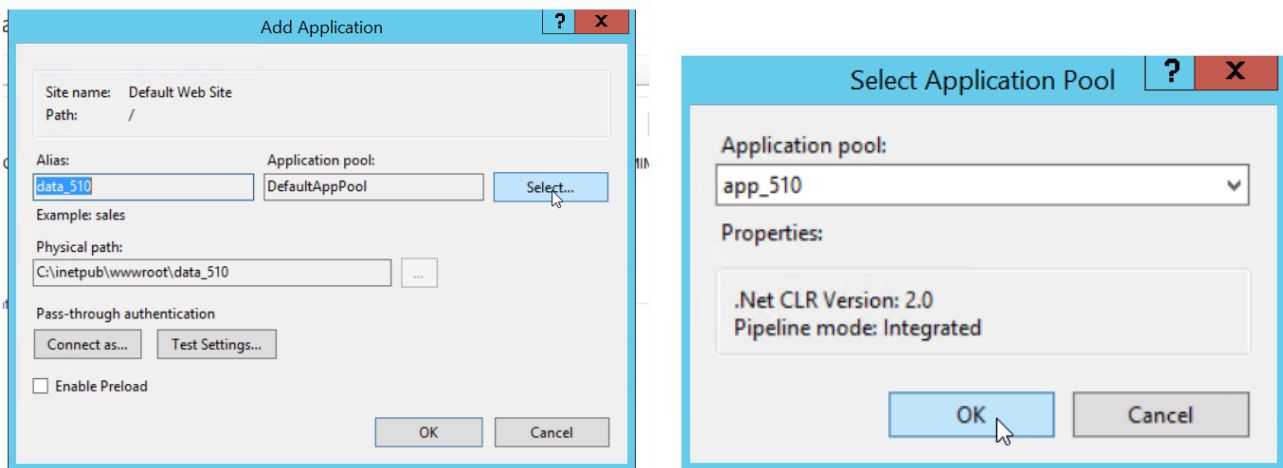


1.2.2. Convert folder to application

- Expand “Sites” node then expand “Default Web Site node”
- Convert those folders to application (right click on each folder, properties and select "Convert to application" button, then "OK" button)
 - accdata_1_7
 - BAM
 - Download
 - Welcome
- Convert folder data_510 to application (Click right on the folder, properties and select "Convert to application" button): **app_510 must be selected.**

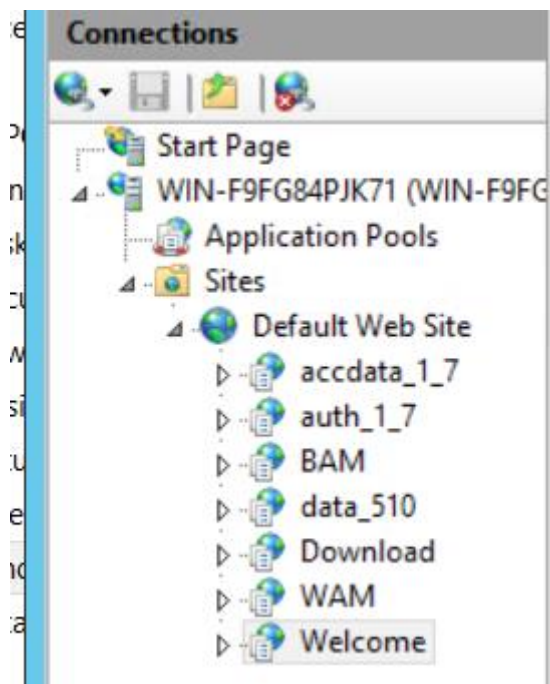


Click on button Select, choose Application pool "app_510" on the combo box and click on "OK"



- Redo operation with folder WAM and **application pool "app_wam"**
- Redo operation with folder auth_1_7 and **application pool "app_auth"**

Result:



1.2.3. Compression

- Make sure, that automatic compression is disable:(in Default Web Site, Compression)



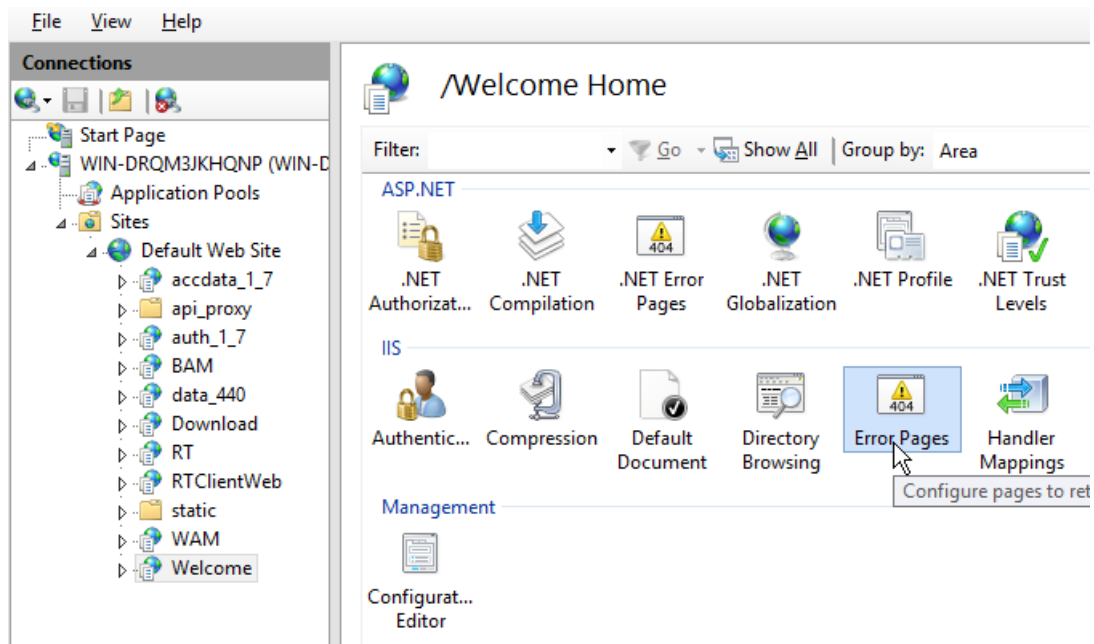
Compression

Use this feature to configure settings for compression of responses. This can improve the perceived performance of a website greatly and reduce bandwidth-related charges.

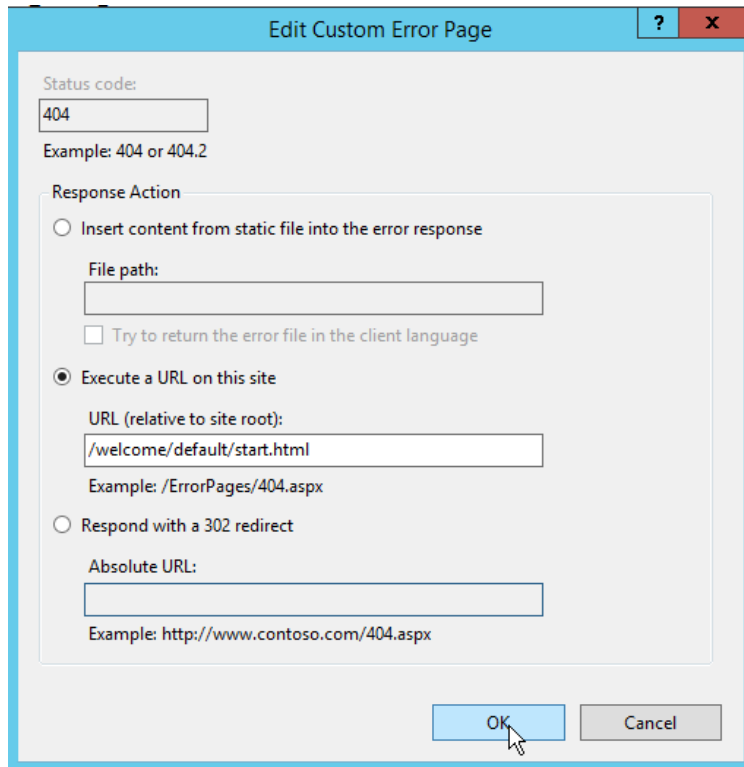
- Enable dynamic content compression
- Enable static content compression

Configure Home page

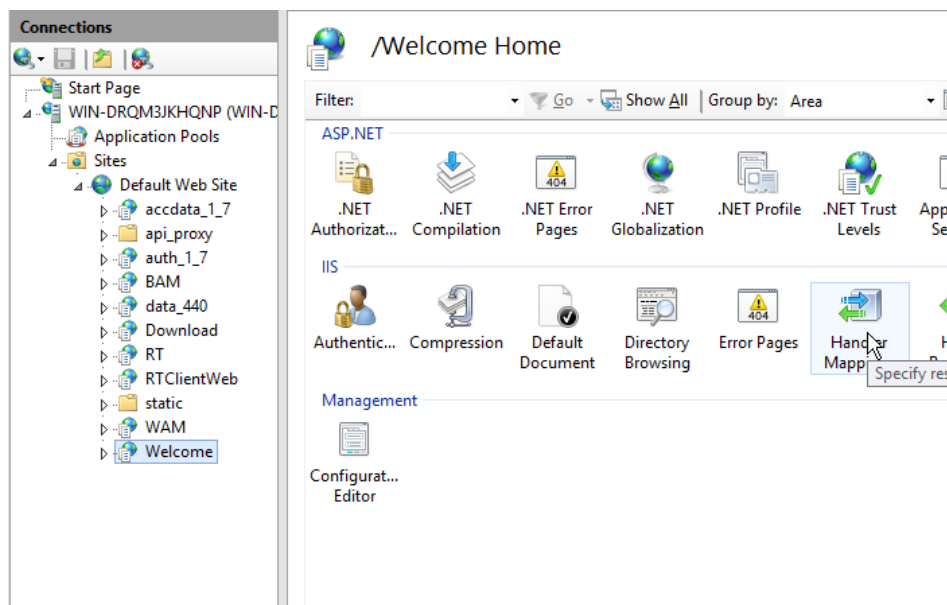
- Select "Welcome" node, double click on "Error Page" button



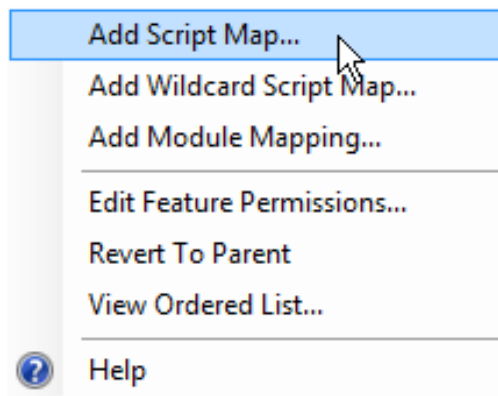
- Modify the 404 default page
 - Select "execute url on this site" and set URL to /welcome/default/start.html
 - click on OK button



- Select "Welcome" node, double click on "Handler Mapping" button



- make a right click then click "Add Script Map"



Request path: *.htm

Executable. Aspnet_isapi.dll (Should be in C:\Windows\Microsoft.NET\Framework\v2.0.xxx folder)

Name. A descriptive name. (example htm)

- add another new Script Map

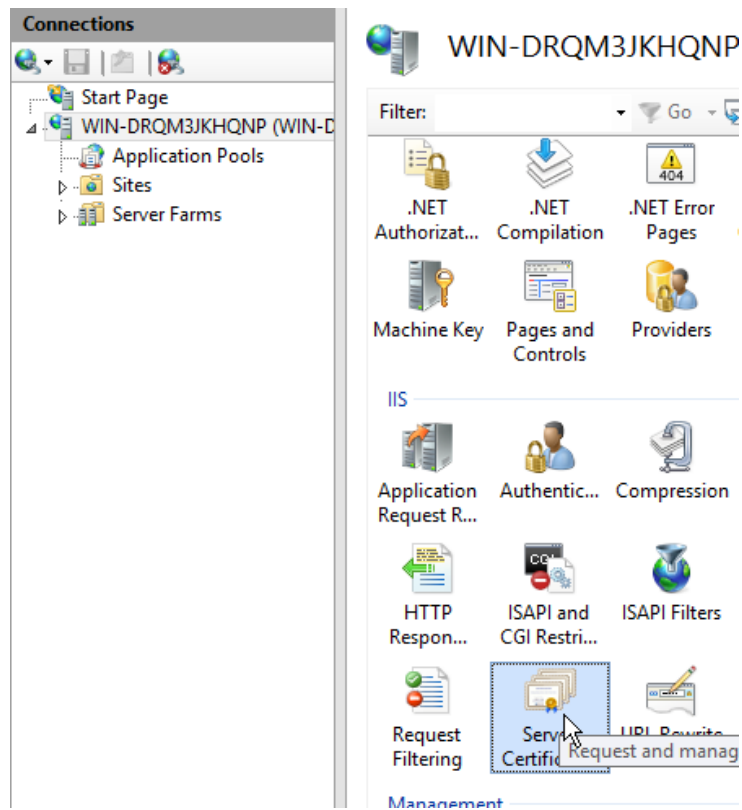
Request Path. *.html

Executable. Aspnet_isapi.dll (Should be in C:\Windows\Microsoft.NET\Framework\v2.0.xxx folder)

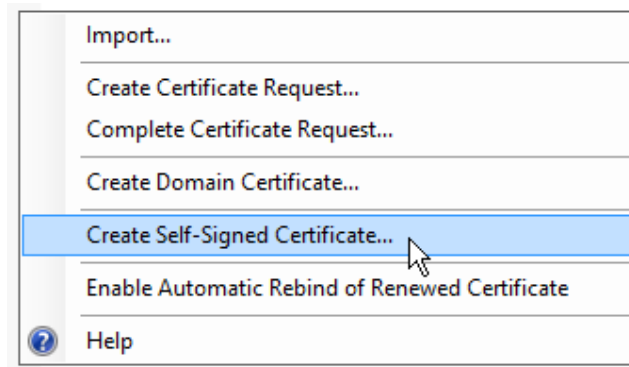
Name. A descriptive name. (example html)

1.2.4. Configuring HTTPS

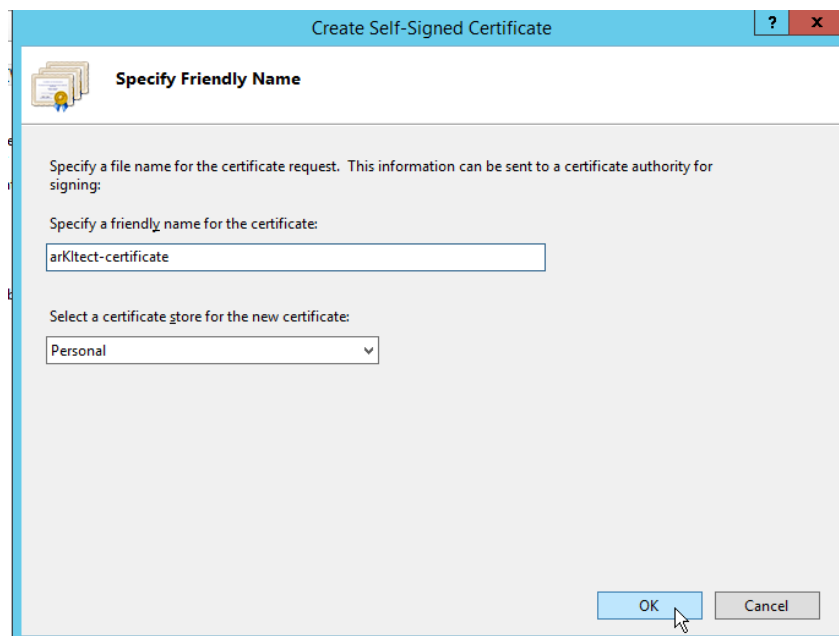
- Click on main node (with Server name), then double click on "Server Certificates" button



- Make a right click then click on "Create auto-signed certificate"

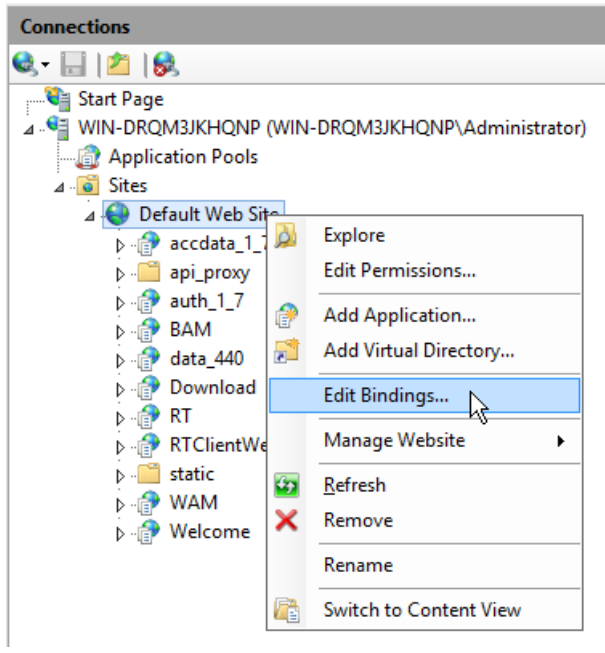


- Choose a name and click on OK

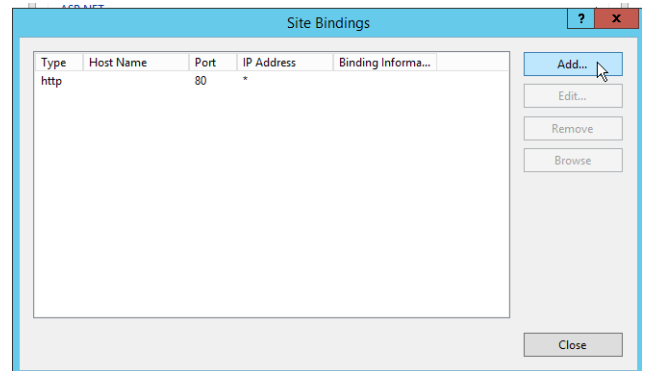


=> Certificate is added on the list

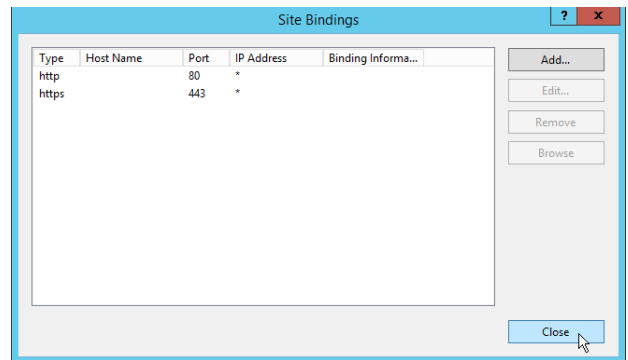
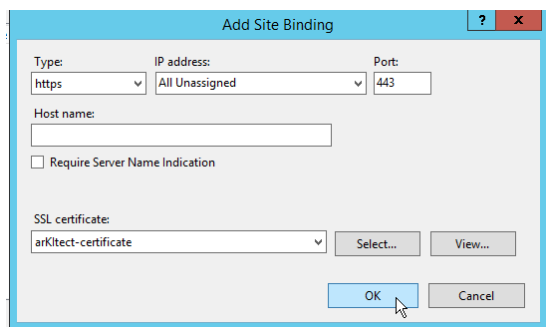
- Expand "Sites" node, right click on "Default Web Site" then select "Edit Bindings..."



- Click on "Add..."



- Set "Type" to "https" and "SSL certificate" with certificate created sooner
- Click on OK then Close



1.3. Configuring SMTP

- Edit file C:\inetpub\wwwroot\Web.config
- Add your informations under appSettings:

```
<add key="DomainName" value="http://domaine.com " />
<add key="SMTPServer" value="smtp.email.com"/>
<add key="EMailAddress" value="some@email.com"/>
<add key="EMailPassword" value="password"/>
<add key="SupportEMail" value="admin@email.com"/>
```

- EmailAddress and EmailPassword are not mandatory if SMTP doesn't need it
- DomainName can be a DNS or the IP
- SupportEMail is not mandatory. It's a e-mail address where all notifications go.

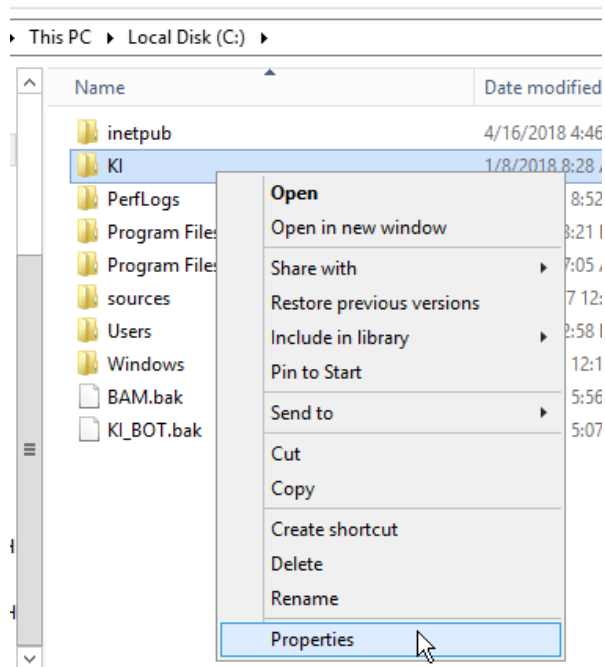
Web.config example:

```
<?xml version="1.0"?>
<configuration>
  <appSettings>
    <add key="ConnectionString" value=" Data Source=SQLINSTANCE;Initial
Catalog=%s;Integrated Security=True;Connect Timeout=40" />
    <add key="DomainName" value="Domain" />
    <add key="EMailAddress" value="some@email.com"/>
  </appSettings>
</connectionStrings/>
<system.web>
  <globalization requestEncoding="utf-8" culture="fr-FR" responseEncoding="utf-
8"/>
</system.web>
</configuration>
```

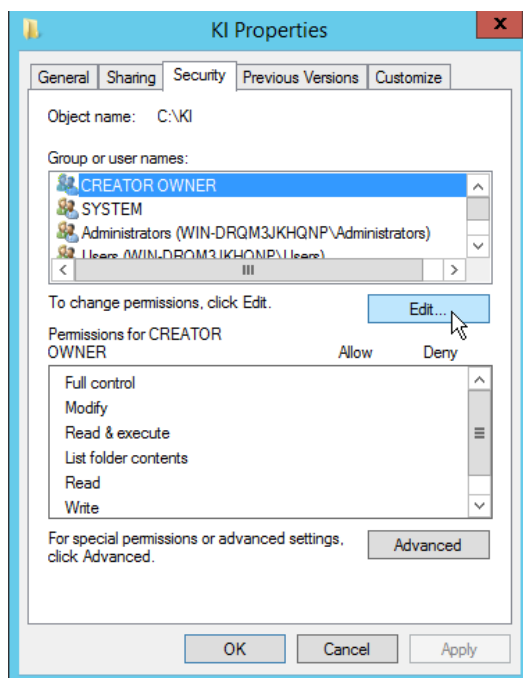
2. Extract Data

2.1. KI Folder

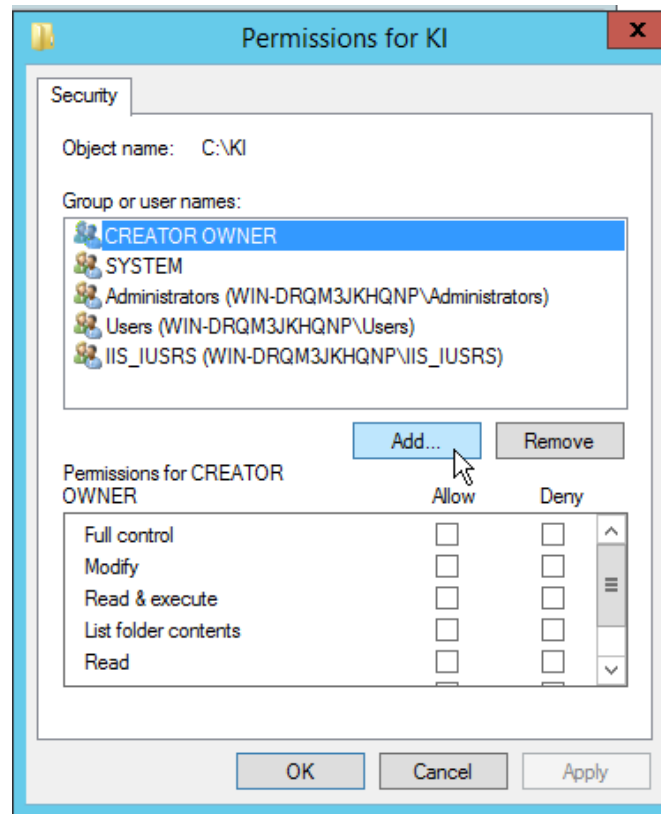
- Extract/place the **Data Server\KI** folder
- Extract/place the **Main Server\KI** folder in same folder (merge folders)
- Right click on the **%KI_folder%** folder, on properties



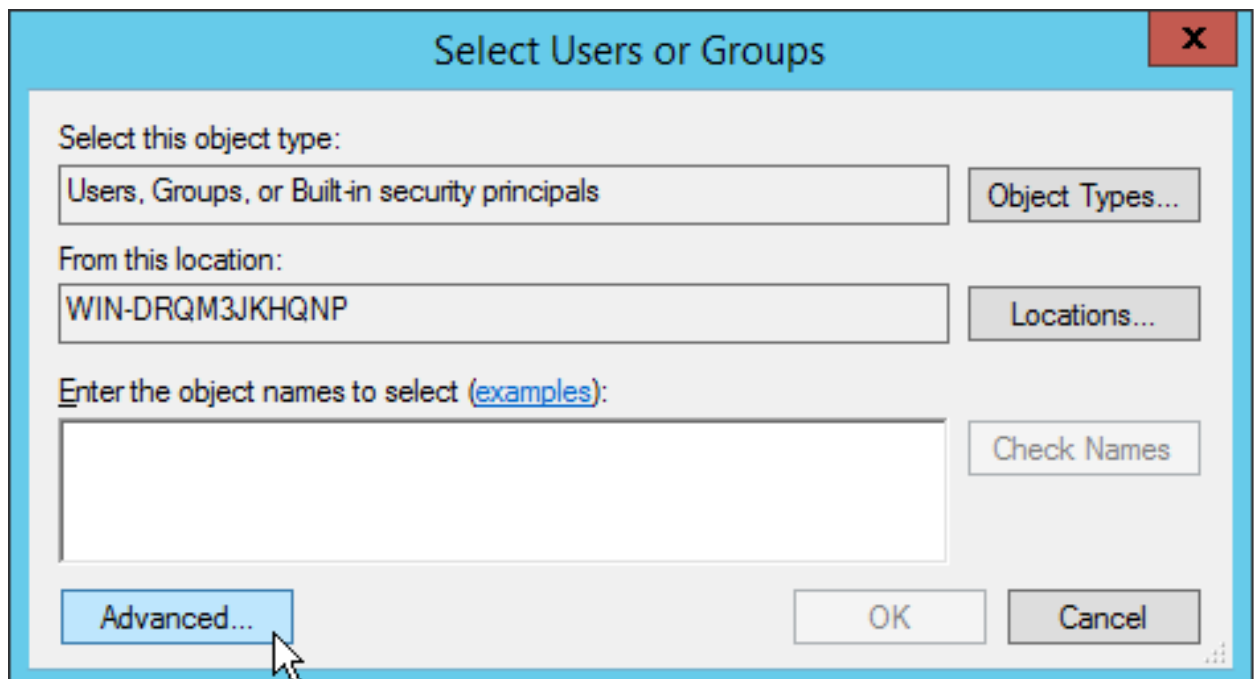
- On the **Security Tab**, click on "Edit" button



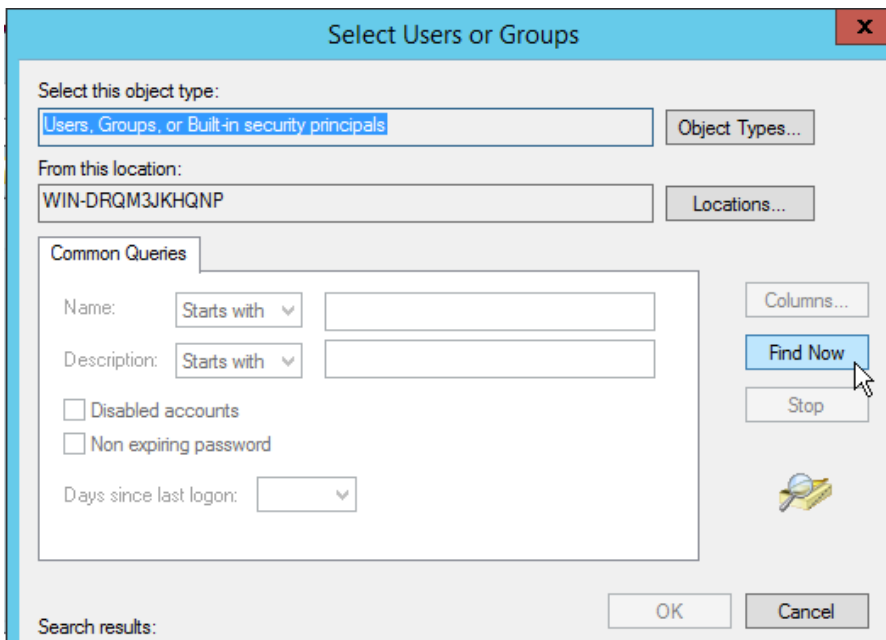
- Click on "Add" button



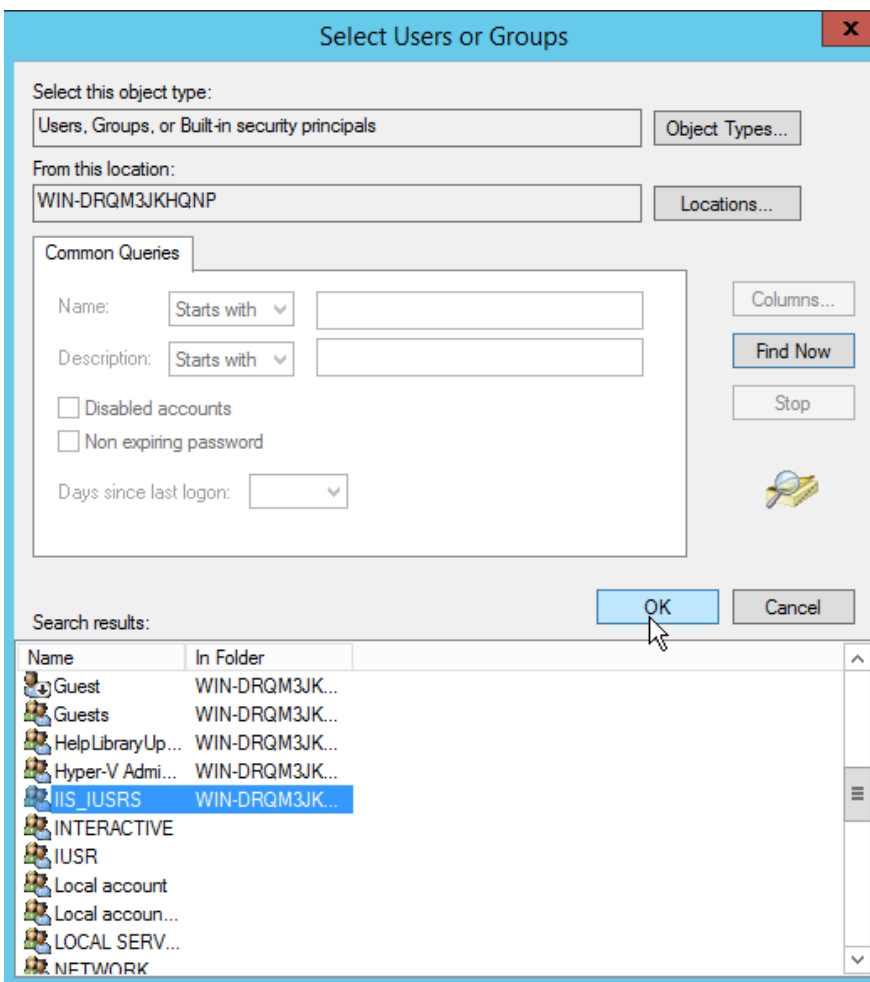
- Click on "Advanced" button



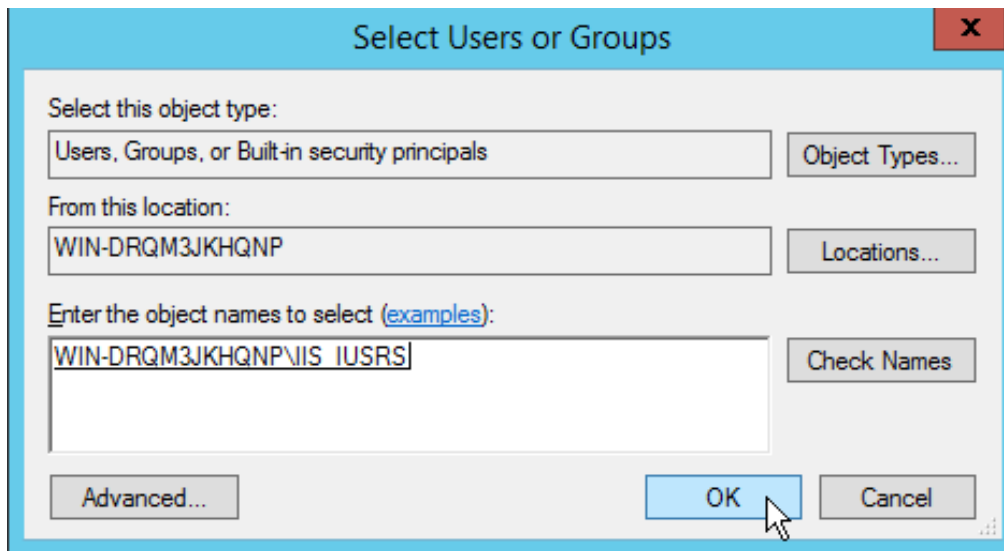
- Click on "Find Now" button



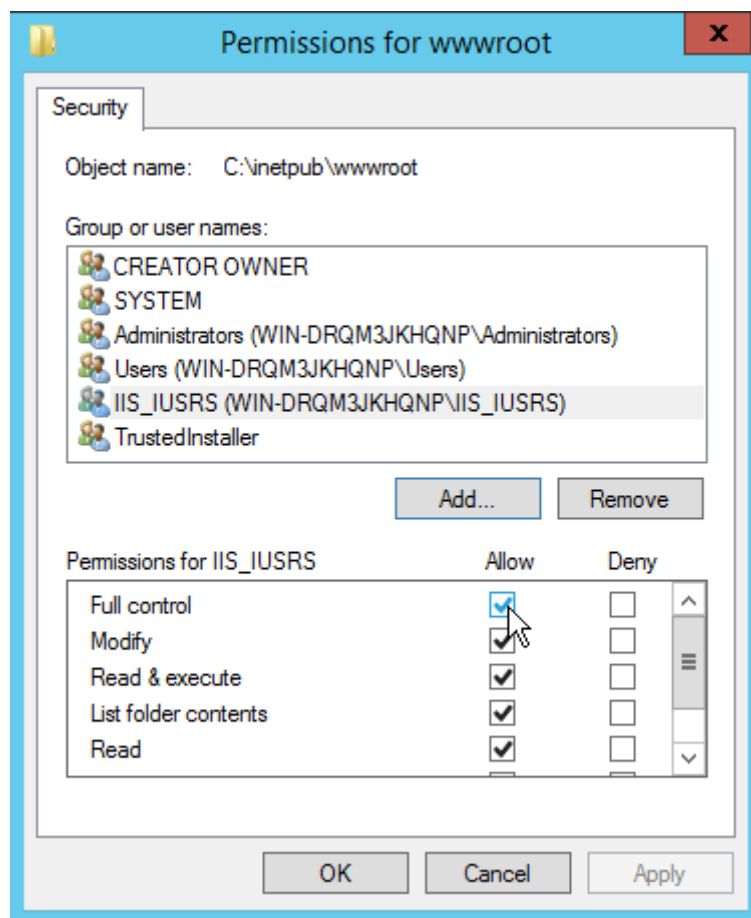
- Find and select IIS_IUSRS, then click on "OK"



- Click on button "OK"

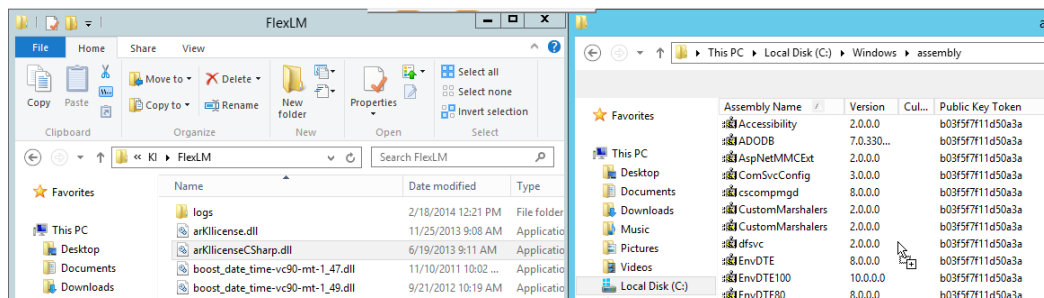


- Set Full Control to this user



2.2. FlexLM configuration

- The License system uses a crypted file common to all Servers (BAM, WAM, ...). The path to this file must be configured. This is an absolutely mandatory step, there's no default path
- Open the file `%KI_folder%\FlexLM\persistence.cfg` with the notepad and check the path. This must be a full path (absolute directory+filename) where you want the crypted file to be saved. This must be an existing path, with write-access granted to the Server processes, and the same directory for all parts of the same Installation. However different installations on the same computer must use different paths.
- Drag and drop `%KI_folder%\FlexLM\arklicenseCSharp.dll` file to `C:\WINDOWS\assembly`



- Register path of `%KI_folder%\FlexLM` folder in global variable
- Restart the Server

To secure our application, we use **FlexLM**. License is checked on server side during authentication.

Licenses are placed in KI/Flex folder as a *.lic files. For every BS.

To get such license administrator must create BS in BAM, press edit button on it and send BS_Id to KI support. Also he should tell number of licenses (or floating licenses).

While licenses determine number of users, which can have access to client - floating licenses determine number of users which can be connected at the same time. But in that case number of registered users is not restricted.

FlexNet Publisher (formerly known as FLEXlm) is a software license manager from Flexera Software which implements

license management and is intended to be used in corporate environments to provide floating licenses to multiple end users of computer software.

2.3. Install_Dir Key

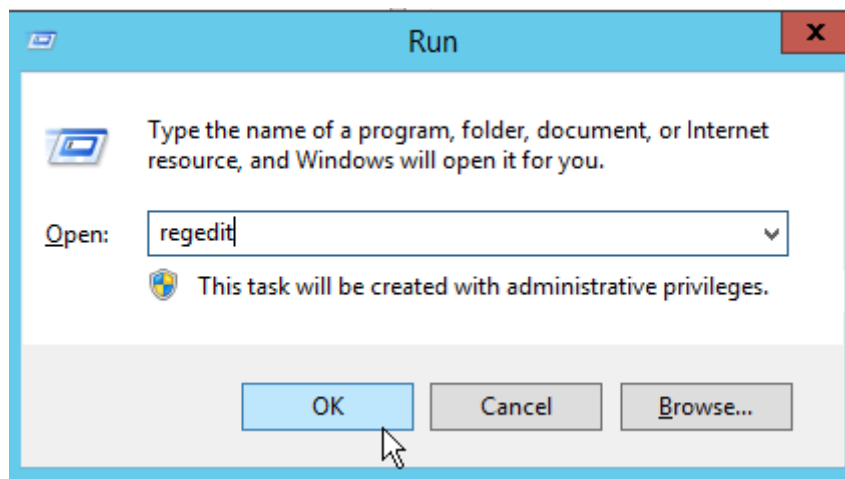
This chapter is mandatory only if %KI_folder% path is not on C:\KI

- Open a command prompt and enter this command

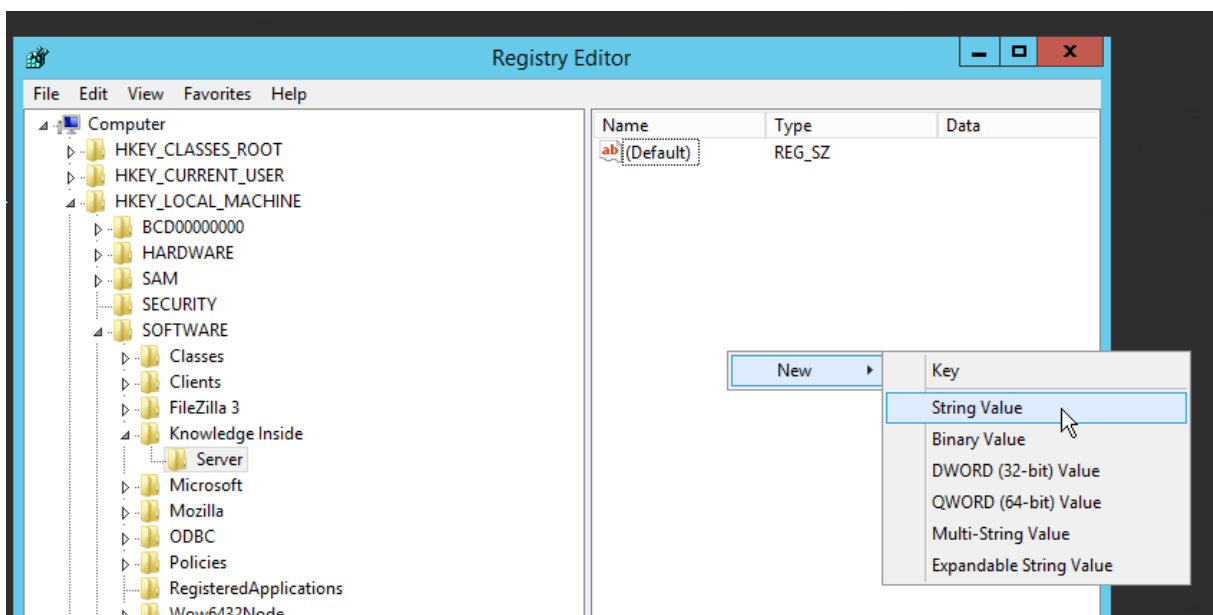
```
reg add "HKEY_LOCAL_MACHINE\SOFTWARE\Knowledge Inside\Server"
```

```
C:\Users\Administrateur>reg add "HKEY_LOCAL_MACHINE\SOFTWARE\Knowledge Inside\Server"
```

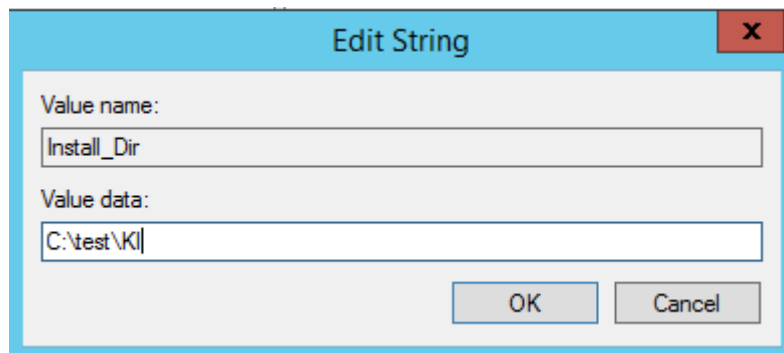
- Open the Run Command thanks to shortcut Windows key + R
- Type "regedit" and click on "OK"



- In HKEY_LOCAL_MACHINE\SOFTWARE\Knowledge Inside\Server folder, add a new string named **Install_Dir** (right click/string value)



- Define the path where KI folder will be placed



The image shows a standard Windows-style dialog box titled "Edit String". It has a light blue header bar with a red "X" button in the top right corner. The main area is light gray and contains two text input fields. The first field is labeled "Value name:" and contains the text "Install_Dir". The second field is labeled "Value data:" and contains the text "C:\test\KI". At the bottom right of the dialog, there are two buttons: "OK" and "Cancel".

3. Configure SQL Server

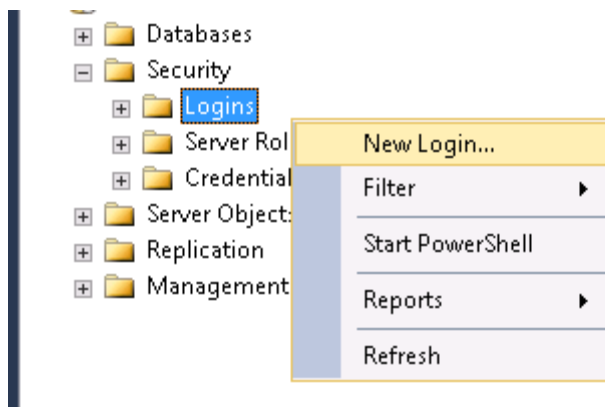
- Launch SQL Server Management Studio
 - Click on "New Query", copy this script :

```
Sp_configure 'show advanced options', 1
GO
RECONFIGURE
GO
Sp_configure 'xp_cmdshell', 1
GO
RECONFIGURE
GO
```

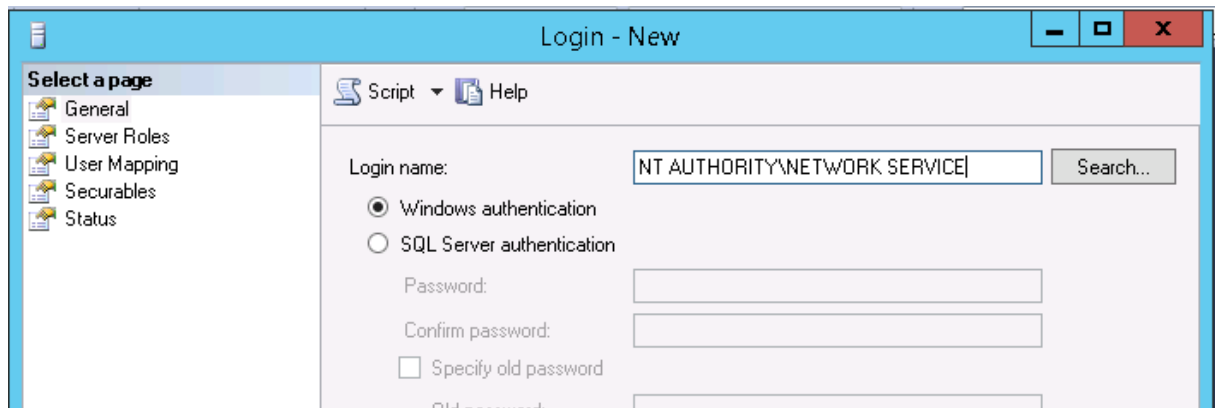
- Click on « Execute »

3.1. Add user and authorization

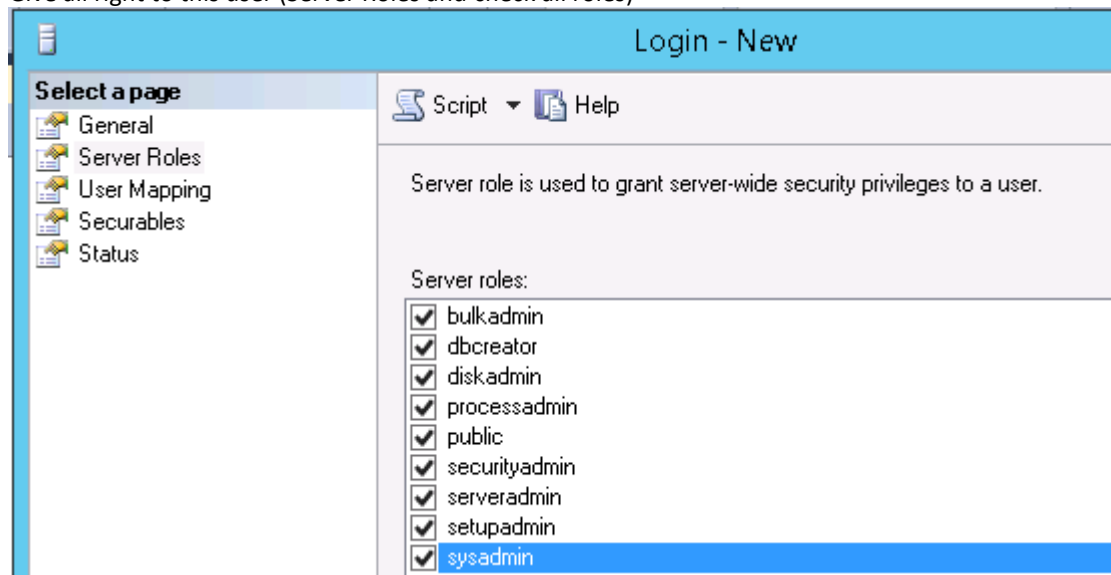
Create a new user thanks to a right click on Security/Logins and New Login... button



- Add user NT AUTHORITY\NETWORK SERVICE for an English server; AUTORITE NT\SERVICE RÉSEAU for a French server (don't forget the É on word RÉSEAU)



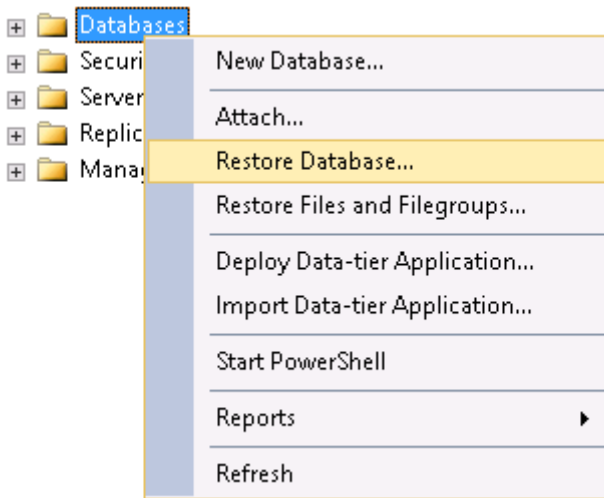
Give all right to this user (Server Roles and check all roles)



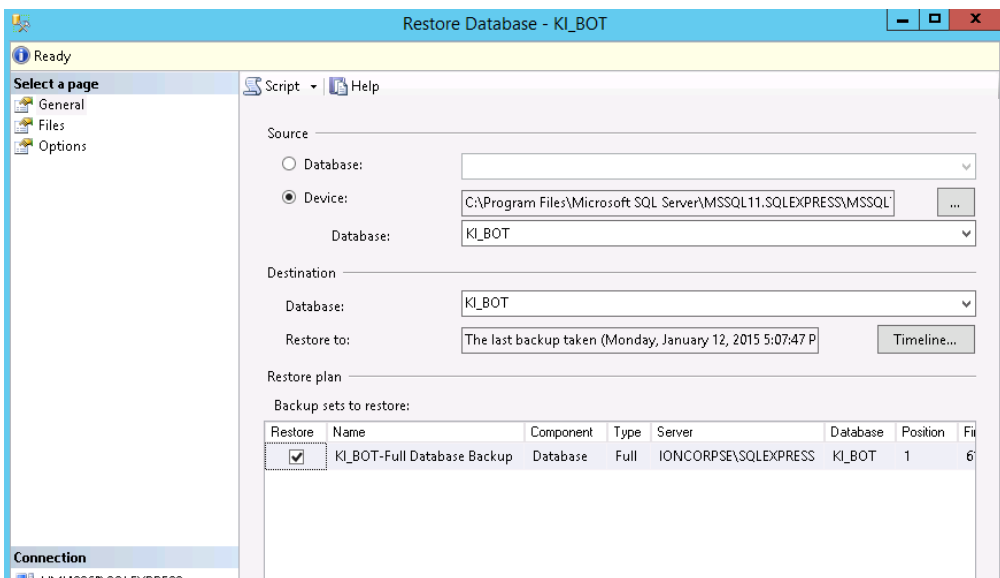
- Add user NT AUTHORITY\IUSR for an English server; AUTORITE NT\IUSR for a French server, and give all right to this user

3.2. Restore KI_BOT

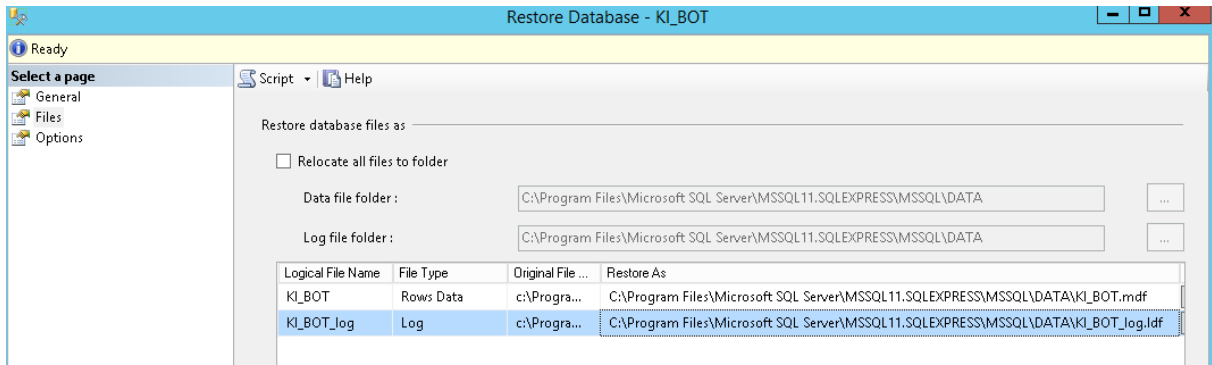
Copy file Main Server 1.8\Main Server\BAM.bak to SQL Server Backup folder
Click right on Databases, Restore database



Select Source/Device and browse to select file KI_BOT.bak file



Select Files page and set database path to %SQL_Data_Path%\KI_BOT.mdf and log path to %SQL_Data_Path%\KI_BOT_log.ldf,
Example: C:\Program Files\Microsoft SQL Server\MSSQL11.SQLEXPRESS\MSSQL\DATA\KI_BOT_1.ldf



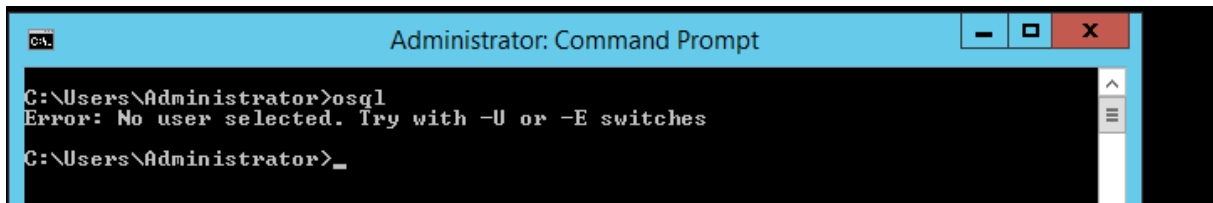
3.3. Restore BAM

Restore BAM database thanks to Main Server/BAM.bak file.
The process to restore this database is the same as KI_BOT

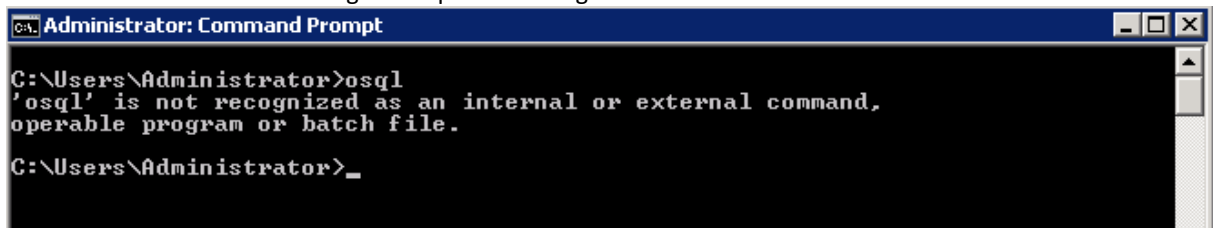
3.4. Install osql

Check if osql is known by your system:

Open a command prompt and enter the command `osql` : must return message "Error : no user selected"



If the command return a message « 'osql' is not recognized »



Set path (in Windows Global Variables) like `C:\Program Files\Microsoft SQL Server\100\Tools\Binn\` directory, where `OSQL.exe` is located.

3.5. Microsoft SQL server 2012 add-on

MS SQL server 2012 doesn't guarantee sequential numbers for Identity fields.

So we need to reseed the BS ID on each server start (other sequential numbers are not critical). To install the automatic fix for this issue run procedure from this file in SQL manager:

SQLServer2012fix.sql

3.6. Connection to IIS

If your SQ Server instance isn't named as "SQLEXPRESS", you have to modify C:/inetpub/wwwroot/Web.config file

```
<add key="ConnectionString" value=" Data Source=SQL_INSTANCE_NAME;Initial Catalog=%s;Integrated Security=True;Connect Timeout=40" />
```

Update " SQL_INSTANCE_NAME " with your instance name

If you have one server to host only SQL part and one server to host everything else, you have to modify C:/inetpub/wwwroot/Web.config file with such format:

```
<add key="ConnectionString" value=" Data Source=.\SQLEXPRESS;Initial Catalog=%s;User ID=USER_SQL;Password=PASS_SQL" />
```

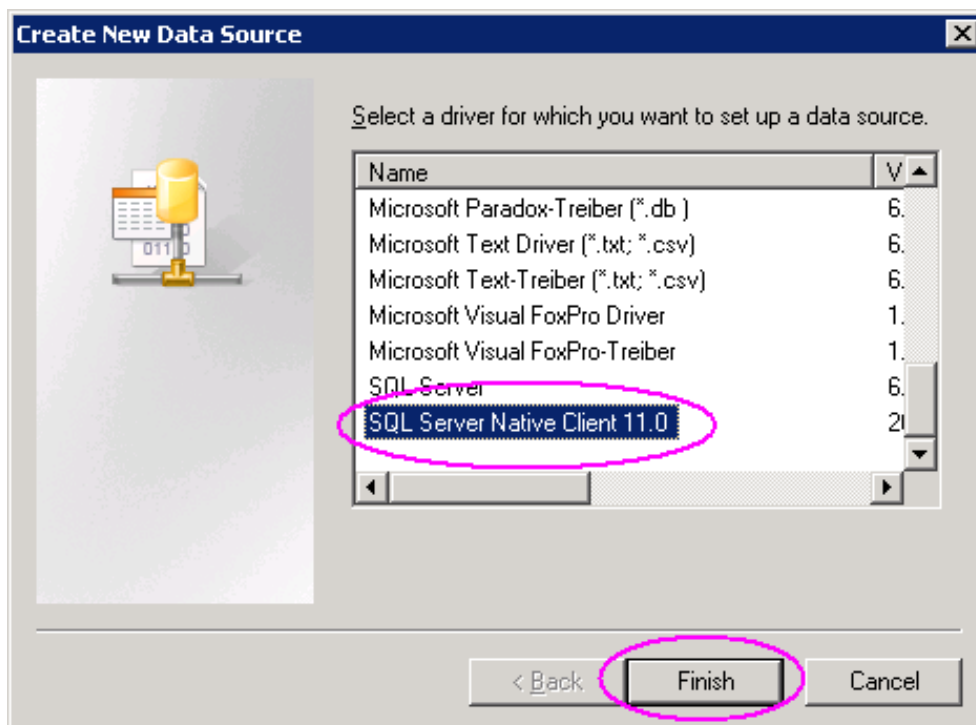
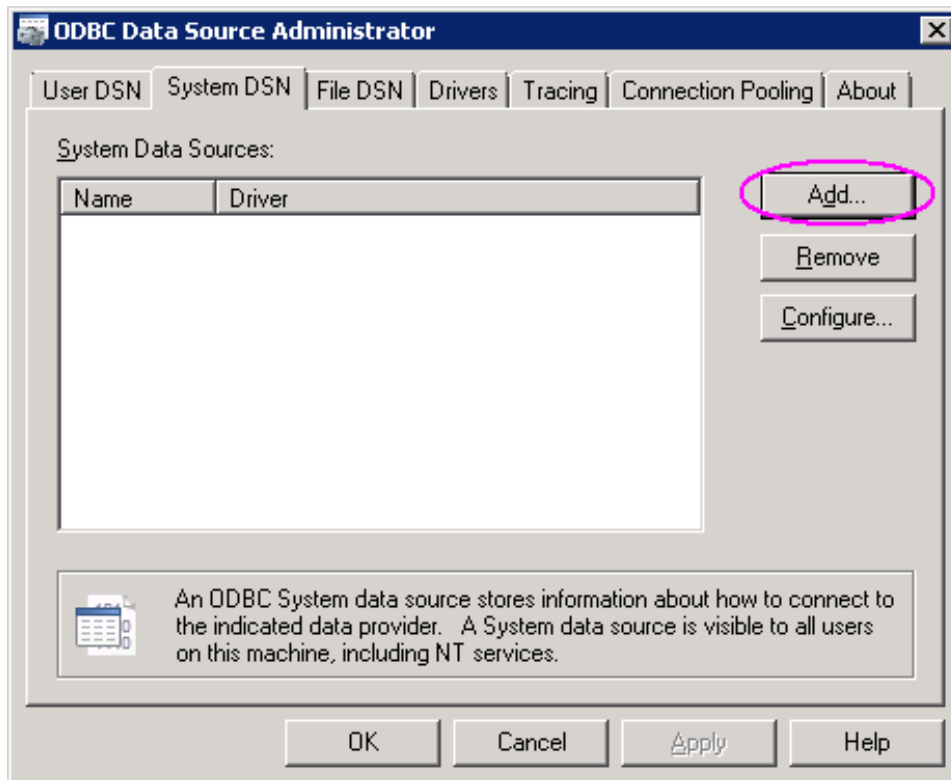
4. Configure ODBC connection

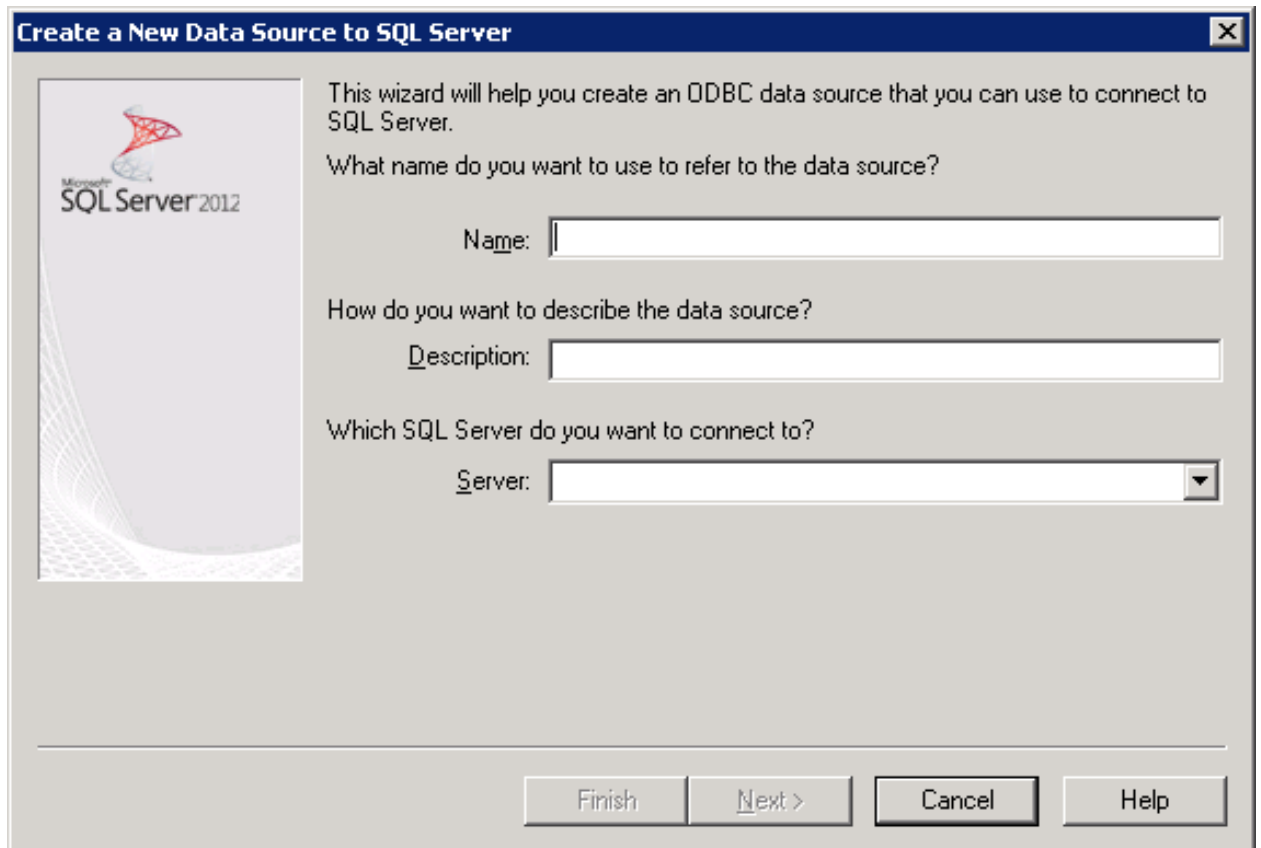
While the SQL Server installation maybe be 64-bits itself, the Data Server is 32-bits and so requires a 32-bits ODBC connection. The setup is very simple and standard.

1. Run the 32-bits ODBC configuration panel. On a 32-bits Windows, it's accessible from the Control Panel (*Administrative Tools* -> *Data Sources (ODBC)*). On a 64-bits Windows, run this command, to be adapted to your Windows installation:

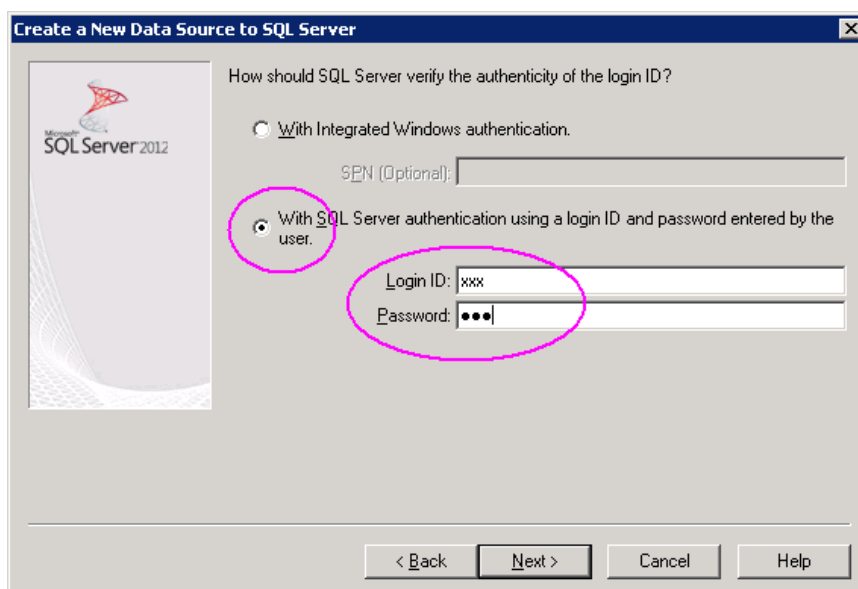
```
C:\Windows\SysWOW64\odbcad32.exe
```

2. Add a new System DSN using the SQLServer driver shipped with SQL Server (version may differ from screenshot)

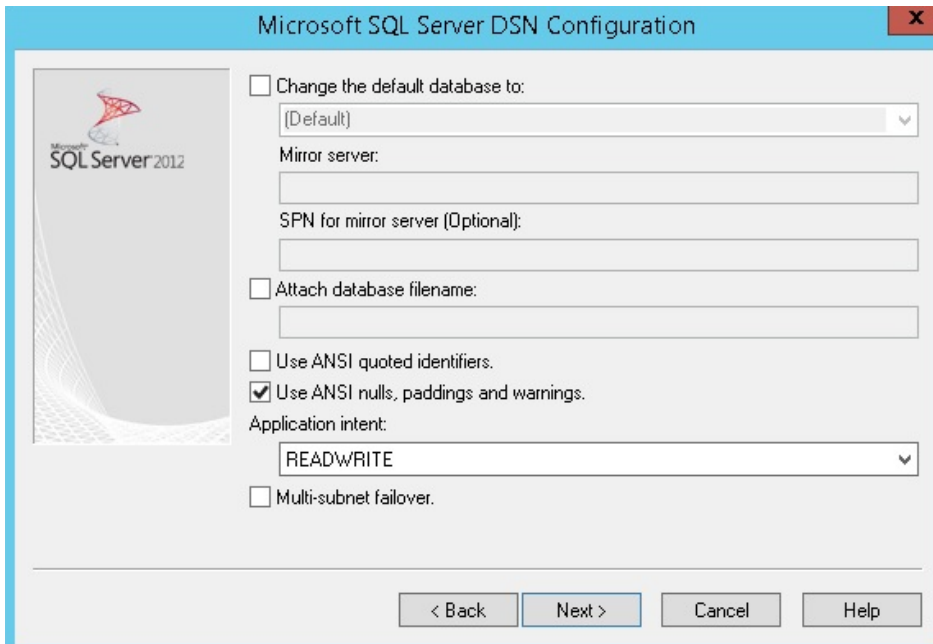




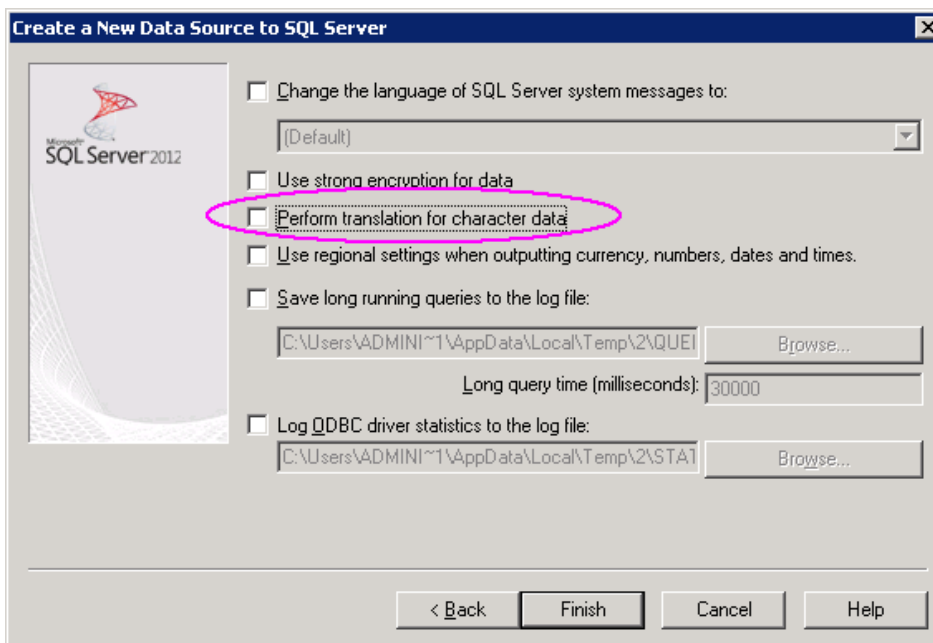
- Name: choose a name (with no space, no special character) and remember it, it will be used later.
- Description: Optional field, any content is valid
- Server: the same as the server name used to connect the SQL Server with SQL Server Management Studio



Select SQL Server authentication and enter a valid login and password for SQL Server. They are not bound to accounts and won't be transferred to any other program (neither client nor server).



uncheck "Use ANSI quoted identifiers"



Unless you really refuse to use Unicode on database (see Data Server config options below), which would be a somehow bad idea, uncheck the *Perform translation for character data* option. Then finish the ODBC configuration.

5. Configure Data Server

The Data Server itself must be configured according to the preceding ODBC configuration. Edit data files (last version is C:\inetpub\wwwroot\data_510\web.config)

Here's an example of the part of the file where the configuration is to be done:

```
<appSettings>
  <add key="LogSQL" value="False"/>
  <add key="ErrFile" value="arki_connector_release"/>
  <add key="EventType" value="KI.Connector"/>

  <!-- Examples of connection string -->

  <add key="JpdConf"
value="DBMS=MSSQLServer;login=sa;password=password;server=SERVERINSTANCE;utf8=1;casesensitive=1;dsn=arki;boundparam=1;notablecheck=1;cachetable=1;bulk=0"/>
  <add key="JpdLogLevel" value="3"/>
  <add key="JpdAppId" value="log_release"/>
  <!-- 0 = false, 1 = true, default = true -->
  <add key="BufferedLog" value="1"/>
</appSettings>
```

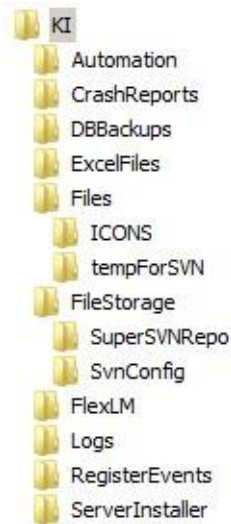
- **JpdLogLevel** : the lower the value is, the more verbose the log is.
 - -1 All Logs, 0 Trace (Almost Everything), 2 Info (Except Trace), 3 Warnings (Except Trace & Info), 4 Errors only, 99 No logs
- **JpdAppId** : prefix for the log files, usefull when several servers are installed on the same machine
- **JpdConf** : a key-value list separated by semicolons. Possible keys and values are :
 - **DBMS** : mandatory. What Database you use. Currently only *MSSQLServer* is known to be workable. Other values are: *Access, Oracle, MySQL, PostGreSQL*
 - **login** : the same as for the ODBC configuration. An active account on the Database, with sufficient rights to create tables and write into them. Some simple DB like Access may not require it.
 - **password** : relative to the login, the same as for the ODBC configuration. Security alert: the password is readable as-is in the file, so don't use an admin account here.
 - **server** : the server where the SQL Server is installed, the same as for the ODBC configuration. Some simple DB like Access may not require it.
 - **port** : in case the server info is not enough, you can also set port (an integer). Not used for SQL Server
 - **utf8** : 0 or 1, to disable or enable the use of Unicode instead of Locale Encoding. Default is 0, but 1 is highly recommended if you use non-ASCII data.
 - **casesensitive** : default is 0 and 1 makes string comparisons case-sensitive.
 - **dsn** : mandatory. the name of the DSN configured in previous step.
 - **boundparam** : if 0 (default is 0), values are written as-is in SQL commands. Otherwise they are sent programatically. Does not affects logs where the SQL commands always contains values as-is. Is more or less a speed improvement depending on the Database used. Setting to 1 is highly recommended for SQL Server.
 - **notablecheck** : Set it to 0 (default) for debug, as it's safest value, and to 1 for production. Skips some runtime checks around tables format.
 - **cachetable** : Similar to notablecheck, but disables still more runtime checks around tables format.

- **bulk** : 1 to enable Bulk insertion for multi-row data. Default value of 0 is recommended for safety.
- **maxinsert** : Ignored if bulk is 1. If bulk is 0, overrides the maximum rows inserted at same time with a multi-insert command. In case multi-insert is not supported by the Database (SQLServer older than 2012 does not support multi-insert), set this value to 1. Default is 96.

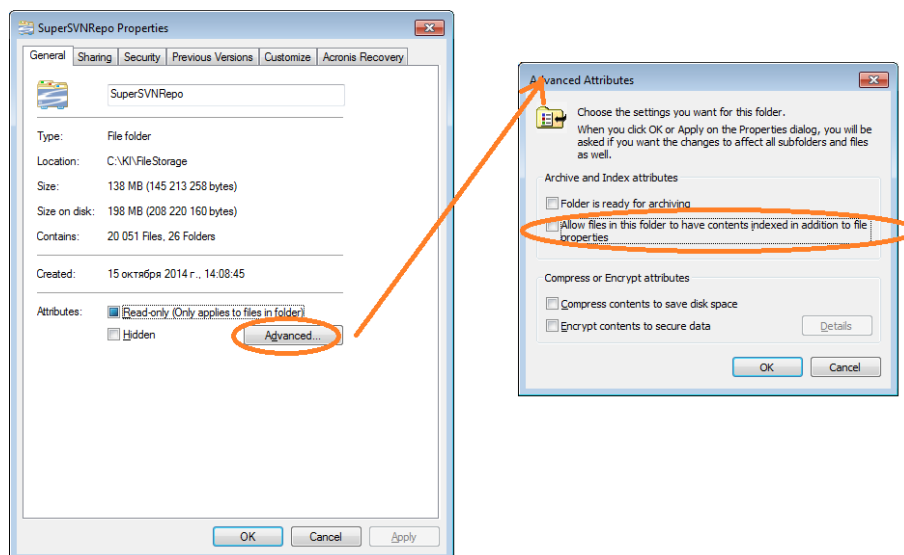
6. SVN

- Create a new folder "SvnConfig" under FileStorage folder
- Create a new folder "tempForSVN" under KI\Files folder

Expected result:



It is mandatory to disable windows indexing service for the SVN repository folder (ie KI\FileStorage\SuperSVNRepo)



If KI folder is not installed on C:\, a key must be added in data web.config file (current is data_410/web.config)

```
<add key="FileStorage" value="D:\KI\FileStorage\SuperSVNRepo"/>
```

7. Configure BAM

- Check, that BAM and WAM works. (<http://localhost/BAM> and <http://localhost/WAM>)
 - Login to BAM. And change default password.
 - Login: user
 - Password: password
 - Password can be changed in menu Misc -> BAM Administrator
- Add new server (Advanced/Servers)
 - Path must be like DataServName
 - Uncheck the option « Check server connection before adding new server"»
- Add a new BusinessSpace (BSs/New) and choose ArKItect Version v1.2

Add new Business space

BSs | Statistic | Licenses | Advanced

New
View/Modify

Name

server Server

v1.2 ArKItect version

Group

Comments

KI Contact

Activate BS New

- Click on BS/Information

BusinessSpace ArKItect

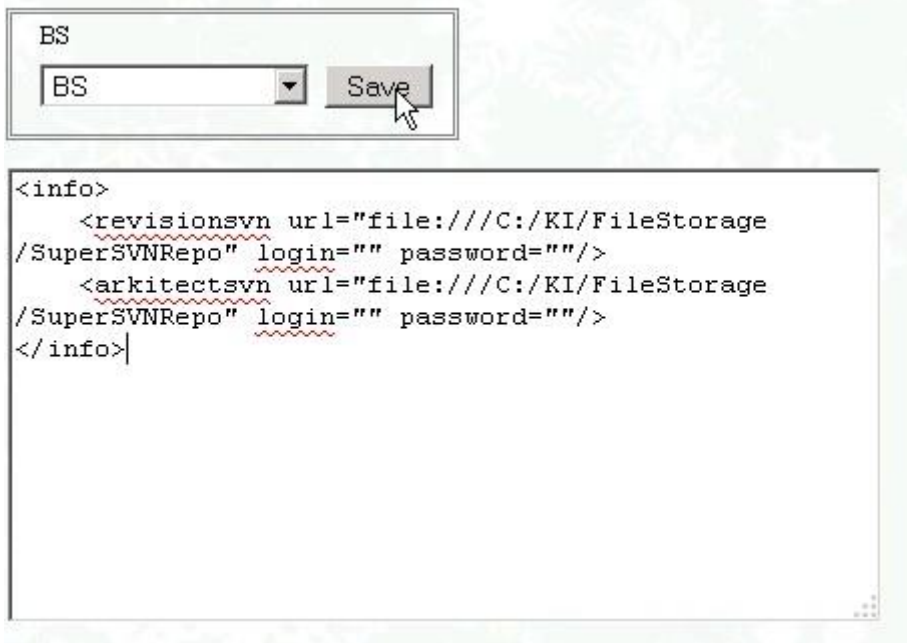
BSs | Statistic

New
View/Modify
Information

- Select your Business Space in the the combo list
- Add this code in the textarea (customize path to svn if need) :

```
<info>
  <revisionsvn url="file:///C:/KI/FileStorage/SuperSVNRepo" login=""
password=""/>
  <arkitectsvn url="file:///C:/KI/FileStorage/SuperSVNRepo" login=""
password=""/>
</info>
```

- Click on "Save"



8. Setup automated Saved Copy task

- Configure KI\DailyCopyManager\config.ini file - setup proper SQL server connection
- Add a new task to Task Scheduler
 1. Run Task Scheduler (find in Windows -> start printing Task Scheduler -> Select and run 'Task Scheduler')
 2. Import the sample task provided - use '_taskScheduler_sample.xml'
In tab Action there should be:

Action: Start a program

Program/script: cmd

Add arguments (optional): /C python.exe performDailyCopy.py >> log_dailyCopy.txt 2>&1

Start in(optional): empty but should be set to working directory (i.e. where performDailyCopy.py is located)

Modify imported daily task:

- rename daily task to identify it easily
- set proper working directory - Start in(optional)
- ensure that output log file of the process 'log_dailyCopy.txt' is put into 'C:\KI\Logs\DailyCopyManager\' or whatever folder is defined for server log
- in 'Triggers' tab set appropriate activation time and regularity (every day, recommended time for activation is about 9p.m.)

3. Test task for proper connection with 'testConnection.py'

Put 'testConnection.py' instead 'performDailyCopy.py' in the arguments of the task, run task and see the log for results

If errors appear, please refer to this readme.txt or address the supplier

4. After a test accomplishes successfully, put back 'performDailyCopy.py' and save the task, check that all options are set correctly.

5. One day later - go to logs and check 'log_dailyCopy.txt' file to see whether daily copies were created successfully

9. Install and configure Tornado server (Optional)

9.1. Configure Tornado

9.1.1. Install IIS URL rewriting

- if your server is 32 bit:

Install Request router thanks to file **Data Server\bin\requestRouter_x86.msi**

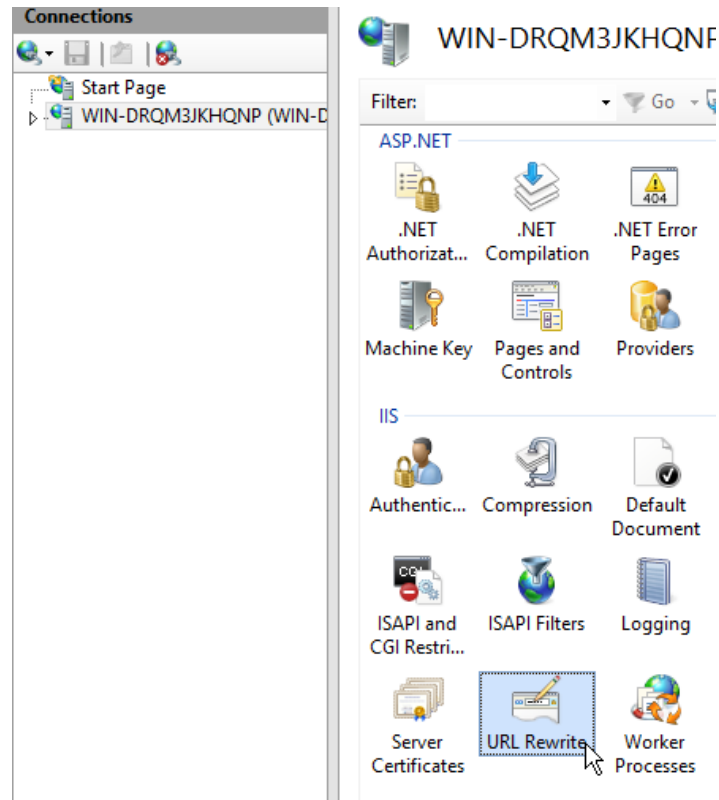
Install URL rewrite thanks to file file **Data Server\bin\rewrite_x86_en-US.msi**

- if your server is 64 bit

Install Request router thanks to file **Data Server\bin\requestRouter_amd64.msi**

Install URL rewrite thanks to file file **Data Server\bin\rewrite_amd64.msi**

Check that URL rewrite is well added in IIS feature list



9.1.2. Tornado configuration

Edit file **%KI_folder%/REST_api/Server/config.ini**:

- Modify `connectionString` and `connectionStringSQL` to fill `DSN`, `USER`, `PASSWORD` and `SERVERNAME`

```
connectionString=DBMS=MSSQLServer;login=USER;password=PASSWORD;server=SERVERNAME;utf8=1;casesensitive=1;dsn=DSN;boundparam=1;notablecheck=1;cachetable=1;bulk=0
connectionStringSQL=dsn=DSN;UID=USER;PWD=PASSWORD
```

- Edit also `LogsDirectory` to set the good `KI_Folder` path.
- Complete SMTP information:

```
SMTPserver= SMTP_SERVER_ADDRESS
SMTPport=25
SMTPsender= EMAIL_ADDRESS_SENDER
SMTPuser= SMTP_USER_NAME
```

SMTPpassword= SMTP_PASSWORD

9.1.3. Python

Replace Python27 folder

Rename your python folder (usually C:\Python27) to C:\Python27_back

Unzip folder Data Server\Python27.zip in same path.

Install pywin32

Run file Data Server\bin\pywin32-227.win32-py2.7.exe

9.1.4. Run Tornado

- open a command prompt as administrator and go to **%KI_FOLDER%\REST_api\Server**
- run this command

```
python tornadoService.py install
```

- go to 'services' and setup to run "arKitect Web server Service (Tornado)" automatically then run it